

Split System Submittal Data

System: **36PEF2U6** Indoor: **S-36PF2U6** Outdoor: **U-36PE1U6**

Single Split System - Concealed Duct Heat Pumps

Job Name: _____
 Location: _____
 Engineer: _____
 Submitted to: _____
 Submitted by: _____
 Reference: _____

Approval: _____
 Date: _____
 Construction: _____
 Unit#: _____
 Drawing#: _____

General Data	
Power (V/P/Hz)	230/208/1/60
Circuit Ampacity (A)	15-35 Indoor-Outdoor
Fuse Size, Max.(A)	15-35 Indoor-Outdoor
Compressor	DC Rotary Inverter
No. Used	1
R.L. Amps - L.R. (A)	16.4 - 17.5
Outdoor Unit	
Fan type	Propeller
Dia & Length (in.) - No. used	18-7/64-1
Type Drive - No. Speeds	DC Motor
No. Poles (RPM)	8 - 830
No. Motors (W)	1 - 90
CFM (High)	1942
F.L. Amps (A)	17.3
Coil Type	Aluminum Fin & Copper Pipe
Fin Type - Pipe Type	Slit Plate - Inner Rifled
Rows - F.P.I.	2-14.1
Face Area (sq.ft.)	7.26
Tube Size (in)	3/8"
Indoor Unit	
Fan type	Sirocco
Dia & Length (in.) - No. used	7-9/32-3
No. Speeds	3 & Auto
No. Poles (RPM, High)	8-1360
No. Motors (W)	1-235w
CFM (Hi/Med/Lo)	1201/989/812
Indoor Sound Rating (Hi) (dB-A)	39
F.L. Amps (A)	1.88
Coil Type	Aluminum Plate Fin & Copper Tube
Fin Type - Pipe Type	Slit Plate - Inner Rifled
Rows - F.P.I.	3-3/64
Face Area (sq.ft.)	4.34
Tube Size (in)	3/8"
Drain Connection Size (in.)	(1-17/64)"



Refrigerant	R410A
Lbs. - R410a	6.2
Control	Electric Expansion Valve
Connection	Flare
Line Length, Max (ft.)	165
Line Difference, Max (ft.)	50 (outdoor lower), 100 (outdoor higher)
Line Size (in. O.D. Discharge)	3/8"
Line Size (in. O.D. Suction)	5/8"
Dimensions (HxWxD)	
Indoor Unit (Crated) (in.)	13-31/32 x 63-9/16 x 33-15/32
Indoor Unit (Uncrated) (in.)	11-7/16 x 55-1/8 x 27-9/16
Outdoor Unit (Crated) (in.)	34-31/32 x 39-31/32 x 16-3/32
Outdoor Unit (Uncrated) (in.)	30-23/32 x 37 x 13-3/8
Weight (lbs.)	
(Indoor) Net	97
(Indoor) Shipping	115
(Outdoor) Net	143
(Outdoor) Shipping	161
(Indoor) Shipping Volume (cu.ft.)	17.2
(Outdoor) Shipping Volume (cu.ft.)	13

Performance Data @ ARI Standard Conditions (230/208V)

Cooling	
Total Capacity (BTU/H)	31,200 (9,500 - 31,200)
Sensible Capacity (BTU/H)	19,570
Latent Capacity (BTU/H)	11,630
SEER	15.5
Dehumidification (Pints/H)	2.9
Amps (A)	18.6/20.6
Power Inputs (W)	3,920/3,920
Outdoor Sound Rating (dB-A) High	52
Heating	
Total Capacity (BTU/H)	37,400 (8,000-37,400)
HSPF	9.6
Amps (A)	15.6/17.3
Max Amps (A)	15.6/17.3
Power Inputs (W)	3,250/3,250
Back-up Strip Heater (KW)	N/A
Outdoor Sound Rating (dB-A) High	52

Features

Controls	Microprocessor
Remote Controller	(Wired Remote Optional) (Wireless Remote Optional)
Temperature Control	IC Thermostat
Timer	72 Hour On/Off
Night Setback	N/A
Air Louver, Horizontal	N/A
Air Louver, Vertical	N/A
Power Failure Automatic Changeover	Built-In
Heating/Cooling Automatic Changeover	Built-In
Self-Diagnosis	Built-In
Air Filter	Field Supplied

Option

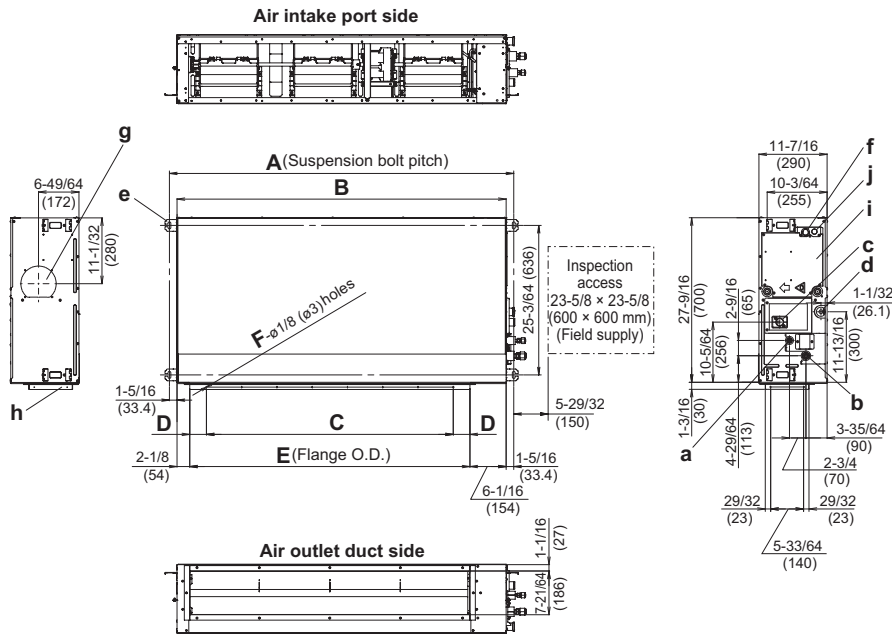
Refrigerant Line Set	Available
Fresh Air Intake	N/A
Air duct Extension	N/A
Indoor Frame Extension	N/A
Condensate Drain Pump	Built in (1.64 ft)
Non-Removable Remo-con Bracket	Available

Operating Range

	Indoor Air Intake Temp	Outdoor Air Intake Temp
Cooling (Max)	95F DB/71F WB	115F DB
Cooling (Min)	67 DB/57F WB	0F DB
Heating (Max)	80F DB/67F WB	75F DB/65F WB
Heating (Min)	-DB/-WB	5F DB (No Lockout)

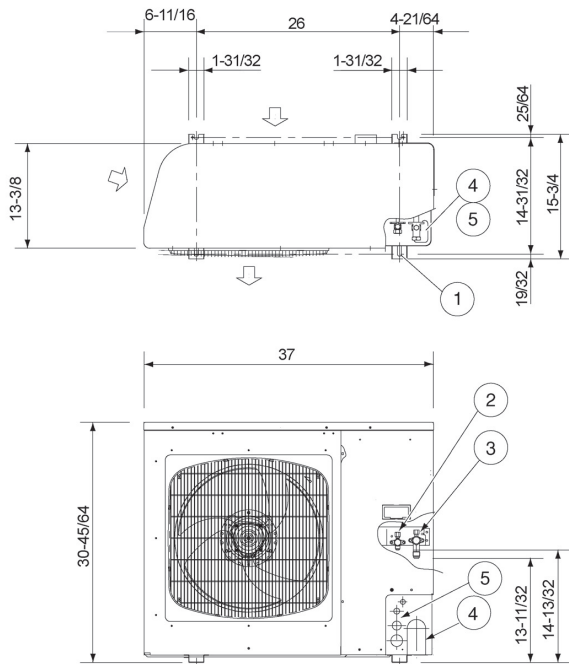


Indoor Dimensions

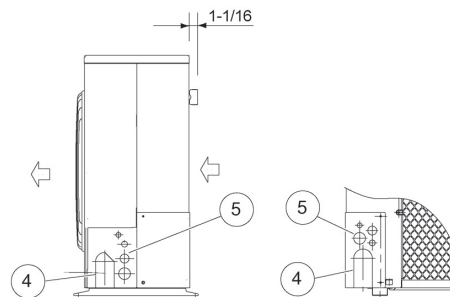


Type		A	B	C	D	E	F
26	inch	42-1/64	39-3/8	29-17/32 (Pitch 5-29/32 × 5)	53/64	31-3/16	16
	mm	1,067	1,000	750 (Pitch 150 × 5)	21	792	
36	inch	57-3/4	55-1/8	41-11/32 (Pitch 5-29/32 × 7)	2-51/64	46-59/64	20
	mm	1,467	1,400	1,050 (Pitch 150 × 7)	71	1,192	

Outdoor Dimensions



- ① Hole for anchor bolt (4-R6.5) / Anchor bolt: M10
- ② Refrigerant tube joint (liquid line tube) • Flare connection 3/8 in (9.52 mm)
- ③ Refrigerant tube joint (gas line tube) • Flare connection 5/8 in (15.88 mm)
- ④ Refrigerant tubing inlet (knock-out hole)
- ⑤ Power supply inlet (knock-out hole ϕ 38, ϕ 29, ϕ 19, ϕ 16 mm)



Dimension: inch

Panasonic

Panasonic North America
 Air Conditioning Division
 1690 Roberts Blvd., NW, Suite 110
 Kennesaw, GA 30144
 us.panasonic.com/aircon

PAC15263SS_36PEF2U6