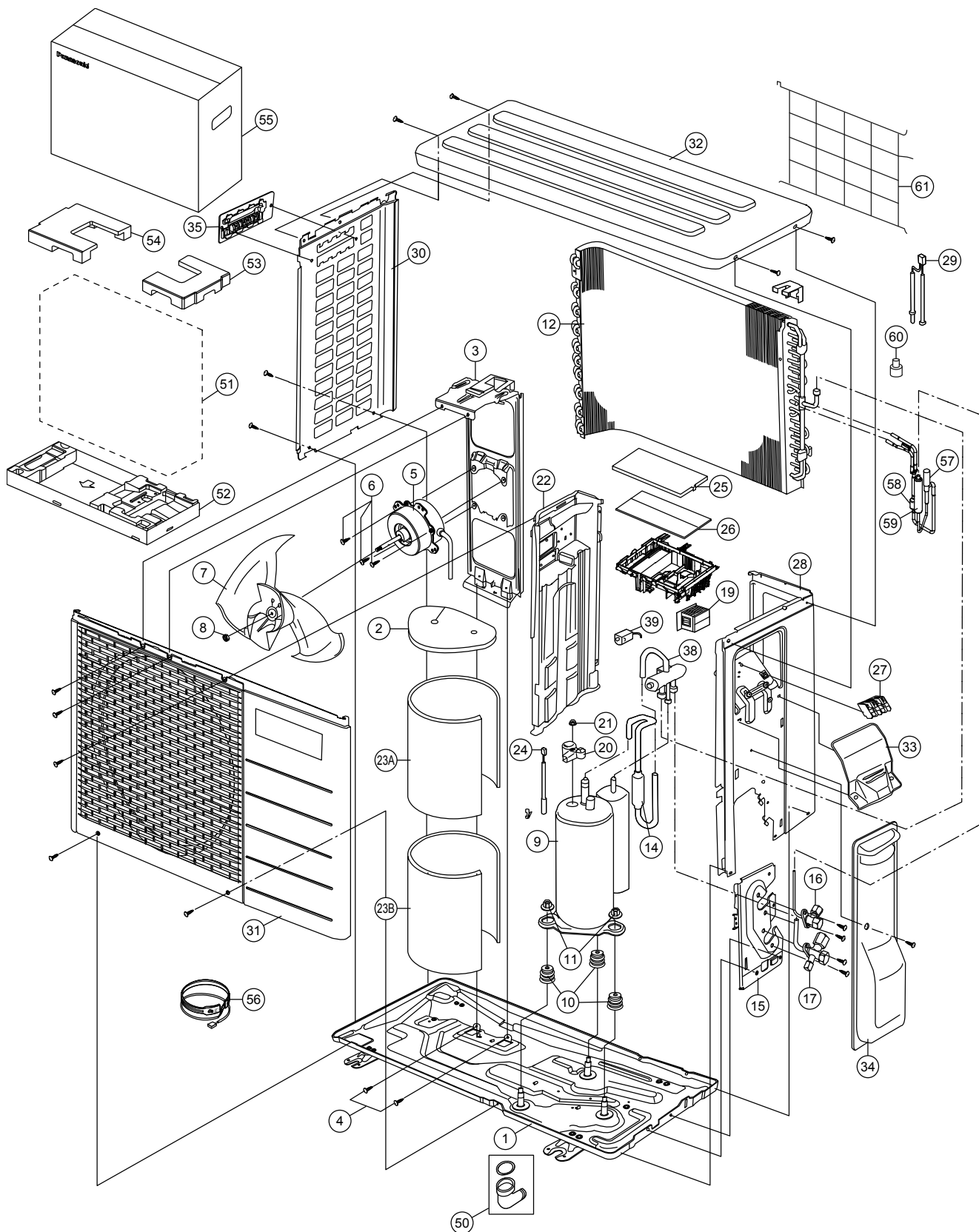


## 19.3 Outdoor Unit

### 19.3.1 CU-E12RB4U



**Note:**

The above exploded view is for the purpose of parts disassembly and replacement.  
The non-numbered parts are not kept as standard service parts.

SAFETY	REF. NO.	PART NAME & DESCRIPTION	QTY.	CU-E12RB4U	REMARK
	1	CHASSIS COMPLETE	1	CWD50K2081A	
	2	SOUND PROOF MATERIAL	1	CWG302570	
	3	FAN MOTOR BRACKET	1	CWD541089	
	4	SCREW - FAN MOTOR BRACKET	2	CWH551217	
⚠	5	FAN MOTOR	1	ARW6404AC	O
	6	SCREW - FAN MOTOR MOUNT	4	CWH55252J	
	7	PROPELLER FAN ASSY	1	CWH03K1014	
	8	NUT - PROPELLER FAN	1	CWH56053J	
⚠	9	COMPRESSOR	1	5RS102XHA21	O
	10	ANTI - VIBRATION BUSHING	3	CWH50077	
	11	NUT - COMPRESSOR MOUNT	3	CWH561096	
	12	CONDENSER	1	CWB32C3394	
	14	DISCHARGE MUFFLER (4 W. VALVE)	1	CWB121047	O
	15	HOLDER COUPLING	1	CWH351231A	
	16	2-WAYS VALVE (LIQUID)	1	CWB021180J	O
	17	3-WAY VALVE (GAS)	1	CWB011367	O
⚠	19	REACTOR	1	G0C193J00004	O
	20	TERMINAL COVER	1	CWH171039A	
	21	NUT - TERMINAL COVER	1	CWH7080300J	
	22	SOUND PROOF BOARD	1	CWH151172A	
	23A	SOUND PROOF MATERIAL	1	CWG302292	
	23B	SOUND PROOF MATERIAL	1	CWG302569	
	24	SENSOR CO-COMP TEMP	1	CWA50C2340	O
	25	CONTROL BOARD COVER - TOP	1	CWH131264	
⚠	26	ELECTRONIC CONTROLLER - MAIN	1	CWA73C9228R	O
⚠	27	TERMINAL BOARD ASSY	1	CWA28K1154	O
	28	CABINET SIDE PLATE CO.	1	CWE04C1226	
	29	SENSOR CO-AIR TEMP AND PIPE TEMP	1	CWA50C2793	O
	30	CABINET SIDE PLATE	1	CWE041492A	
	31	CABINET FRONT PLATE CO.	1	CWE06C1142	
	32	CABINET TOP PLATE	1	CWE031018A	
	33	PLATE - C. B. COVER TERMINAL	1	CWH131301	
	34	CONTROL BOARD COVER CO.	1	CWH13C1208	
	35	HANDLE	1	CWE161010	
	38	4-WAYS VALVE	1	CWB001058	O
⚠	39	V-COIL COMPLETE (4 W. VALVE)	1	CWA43C2432	O
	50	BAG-COMPLETE	1	CWG87C900	
	51	BAG	1	CWG861078	
	52	BASE BOARD-COMPLETE	1	CWG50C2388	
	53	SHOCK ABSORBER ( R )	1	CWG712209	
	54	SHOCK ABSORBER ( L )	1	CWG712210	
	55	C.C.CASE	1	CWG565107	
	56	HEATER	1	CWA341065	O
	57	EXPANSION VALVE	1	CWB051016J	O
	58	STRAINER	1	CWB111061	O
	59	DISCHARGE MUFFLER (EXPANSION VALVE)	1	CWB121021	O
⚠	60	V-COIL COMPLETE (EXPANSION VALVE)	1	CWA43C2393	O
	61	WIRE NET	1	CWD041161A	

(NOTE)

- All parts are supplied from PAPAMY, Malaysia (Vendor Code: 00029488).
- "O" marked parts are recommended to be kept in stock.