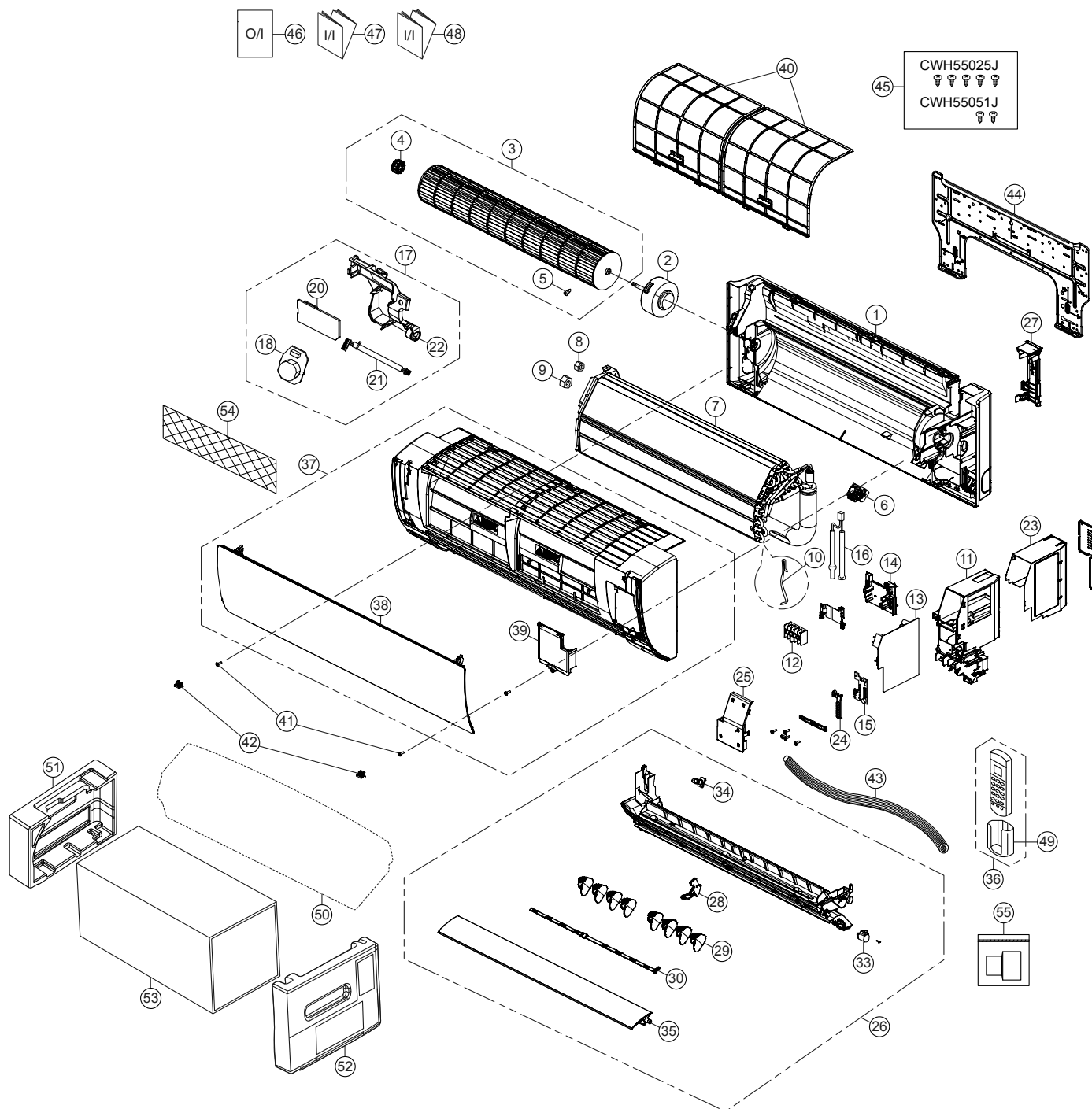


22. Exploded View and Replacement Parts List

22.1 Indoor Unit

22.1.1 CS-E9RKUAW CS-E12RKUAW



Note

The above exploded view is for the purpose of parts disassembly and replacement. The non-numbered parts are not kept as standard service parts.

SAFETY	REF. NO.	PART NAME & DESCRIPTION	QTY.	CS-E9RKUAW	CS-E12RKUAW	REMARK
	1	CHASSIS COMPLETE	1	CWD50C1633	←	
	2	FAN MOTOR	1	L6CBYYYYL0055	←	O
	3	CROSS-FLOW FAN COMPLETE	1	CWH02C1076	←	
	4	BEARING ASSY	1	CWH64K007	←	O
	5	SCREW - CROSS-FLOW FAN	1	CWH551146	←	
	6	PARTICULAR PIECE	1	CWD933067	←	
	7	EVAPORATOR	1	CWB30C5033	CWB30C5026	
	8	FLARE NUT (LIQUID)	1	CWT251030	←	
	9	FLARE NUT (GAS)	1	CWT251031	CWT251032	
	10	CLIP FOR SENSOR	1	CWH321085	←	
	11	CONTROL BOARD CASING	1	CWH102605A	←	
	12	TERMINAL BOARD COMPLETE	1	CWA28C2357	←	O
	13	ELECTRONIC CONTROLLER - MAIN	1	CWA73C9156	CWA73C9157	O
	14	PARTICULAR PIECE - TERMINAL	1	CWD933137A	←	
	15	ELECTRONIC CONTROLLER-INDICATOR	1	CWA748158	←	O
	16	SENSOR COMPLETE	1	CWA50C3228	←	O
	17	SENSOR COMPLETE (ECO)	1	CWA50C2820	←	O
	18	ELECTRONIC CONTROLLER (ECO SENSOR)	1	CWA745791	←	O
	20	ELECTRONIC CONTROLLER (COMPARATOR)	1	CWA746769	←	O
	21	LEAD WIRE - PCB ECO	1	CWA67C9786	←	O
	22	CONTROL BOARD CASING FOR PCB ECO	1	CWD933427	←	
	23	CONTROL BOARD TOP COVER	1	CWH131467	←	
	24	INDICATOR HOLDER	1	CWD933406	←	
	25	CONTROL BOARD FRONT COVER CO.	1	CWH13C1333	←	
	26	DISCHARGE GRILLE COMPLETE	1	CWE20C3495	←	
	27	BACK COVER CHASSIS	1	CWD933233B	←	
	28	FULCRUM	1	CWH621131	←	
	29	VERTICAL VANE	8	CWE241374	←	
	30	CONNECTING BAR	2	CWE261251	←	
	33	AIR SWING MOTOR	1	CWA981264	←	O
	34	CAP - DRAIN TRAY	1	CWH521259	←	
	35	HORIZONTAL VANE COMPLETE	1	CWE24C1385	←	
	36	REMOTE CONTROL COMPLETE	1	CWA75C4567	←	O
	37	FRONT GRILLE COMPLETE	1	CWE11C5960	←	O
	38	INTAKE GRILLE COMPLETE	1	CWE22C1946	←	
	39	GRILLE DOOR COMPLETE	1	CWE14C1131	←	
	40	AIR FILTER	2	CWD001279	←	O
	41	SCREW - FRONT GRILLE	2	XTT4+16CFJ	←	
	42	CAP - FRONT GRILLE	2	CWH521227	←	
	43	DRAIN HOSE	1	CWH851173	←	
	44	INSTALLATION PLATE	1	CWH361134	←	
	45	BAG COMPLETE - INSTALLATION SCREW	1	CWH82C1705	←	
	46	OPERATING INSTRUCTION	1	CWF569755	←	
	47	INSTALLATION INSTRUCTION	1	CWF616529	←	
	48	INSTALLATION INSTRUCTION	1	CWF616530	←	
	49	REMOTE CONTROL HOLDER	1	CWH361078	←	
	50	BAG	1	CWG861497	←	

SAFETY	REF. NO.	PART NAME & DESCRIPTION	QTY.	CS-E9RKUAW	CS-E12RKUAW	REMARK
	51	SHOCK ABSORBER (L)	1	CWG713386	←	
	52	SHOCK ABSORBER (R)	1	CWG713387	←	
	53	C.C.CASE	1	CWG567355	←	
	54	AIR PURIFYING FILTER	1	CWD00C1141	←	O
	55	BAG COMPLETE (TUBE CONNECTOR)	1	CWH82C2030	←	

(Note)

- All parts are supplied from PHAAM, Malaysia (Vendor Code: 00029488).
- “O” marked parts are recommended to be kept in stock.