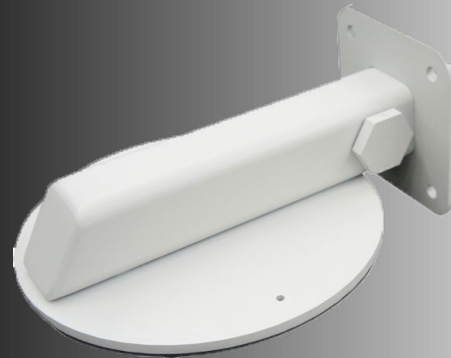


SECURITY
YOU CAN COUNT ON.



Key Features

- 8" Wall Mounting designed for use with Panasonic WV-SFVXXX Vandal Dome Cameras
- Durable aluminum construction with polyurethane coating
- Indoor or Outdoor use
- Colour match to Panasonic cameras
- Includes: 4 slotted head aluminum screws for camera mounting

Description

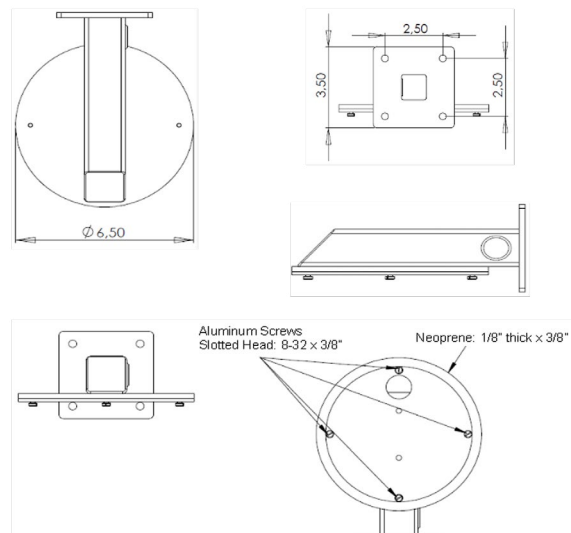
The PANFSM011 is a heavy duty aluminum construction wall mount bracket designed for use with Panasonic WV-SFVXXX series fixed vandal dome cameras. These brackets provide a clean, simple non obtrusive installation of the dome camera in a wall mount pendant format. The bracket is such that it allows for installations close to ceilings, with its low profile design, when you need to maximize the height of the cameras installation. The bracket arm extends out 8" from the wall. PANFSM011 is colour matched to the Panasonic vandal dome series WV-SFVXXX using colour code RAL 7047.

Shipping

Dimensions: 22.86cm (L) x 22.86cm (W) x 10.16cm (D)
9" (L) x 9" (W) x 4" (D)

Weight: 0.45Kg
1lbs

Appearance



Note: Mounting hardware is included with all of the kits and mounting options listed in this document. Included hardware does not include fasteners or anchors for mounting to the wall itself.

business.panasonic.ca
1-800-495-0580