

SECURITY
YOU CAN COUNT ON.



Key Features

- 14" Wall Mount bracket designed for use with Panasonic models WV-SFVXXX Vandal Dome Cameras
- Durable aluminum construction with polyurethane coating
- Indoor or Outdoor use
- Colour match to Panasonic cameras
- Includes: 4 slotted head aluminum screws for camera mounting

Shipping

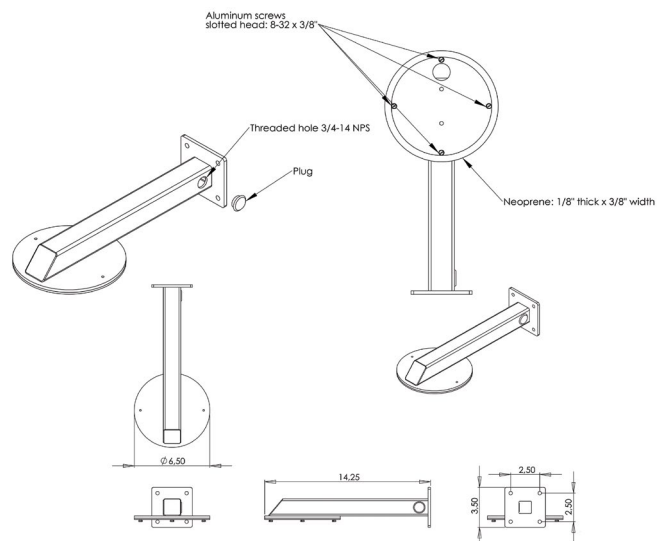
Dimensions: 38.1cm (L) x 25.4cm (W) x 10.16cm (D)
15" (L) x 10" (W) x 4" (D)

Weight: 0.91Kg
2lbs

Description

The PANFSM141 is a heavy duty aluminum construction wall mount bracket designed for use with Panasonic WV-SFV series fixed vandal dome cameras. These brackets provide a clean, simple non obtrusive installation of the dome camera in a wall mount pendant format. The bracket is such that it allows for installations close to ceilings, with its low profile design, when you need to maximize the height of the cameras installation. The bracket extends out 14" from the wall. PANFSM141 is colour matched to the Panasonic vandal dome series WV-SFVXXX using colour code RAL 7047.

Appearance



Note: Mounting hardware is included with all of the kits and mounting options listed in this document. Included hardware does not include fasteners or anchors for mounting to the wall itself.

business.panasonic.ca
1-800-495-0580