

Brackets

Gooseneck Wall Mount

DESCRIPTION

The wall mount brackets PWM20G, PWM20GS are all aluminum wall mount brackets for the WV-CW594, WV-SW395(A), WV-SW397A, and WV-SW598 dome cameras, as well as POD9, PODV9 series pendant style housings. The bracket has a 1 1/2" NPT pipe tread for mounting of the dome cameras and housings. The brackets feature a protective powder coat finish. The PWM20G has a black finish, where as the PWM20GS has a silver finish. The wall mount can be combined with the PACA2 for corner mount applications and with the PAPM3 for pole mount applications.

Made for Panasonic Canada Inc.
5770 Ambler Drive Mississauga, Ontario L4W 2T3
Phone: (905) 624-5010 Fax: (905) 238-2362

SECURITY
YOU CAN COUNT ON.

PWM20G/GS



also available:
PWM20GB: Beige
PWM20GS: Silver

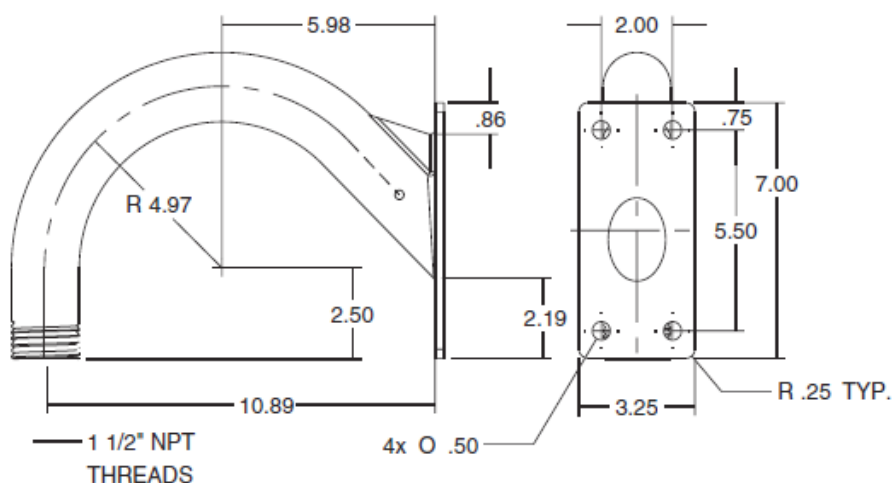
PWM20G (Black)

Key Features:

- Durable powder coat finish
- All aluminum construction
- 1 1/2" pipe thread on end for quick and easy dome mounting
- 50 lb (23 kg) load rating

Shipping:

- PWM20G: 3 lbs 14" x 16" x 10"
(1.4 kg / 356mm x 407mm x 254mm)
- PWM20GB: 3 lbs 14" x 16" x 10"
(1.4 kg / 356mm x 407mm x 254mm)



Panasonic ideas for life

www.panasonic.ca