

Split System Submittal Data

System: **26PEK2U6** Indoor: **S-26PK2U6** Outdoor: **U-26PE1U6**

Single Zone Heat Pump- Wall Mounted

Job Name: _____
 Location: _____
 Engineer: _____
 Submitted to: _____
 Submitted by: _____
 Reference: _____

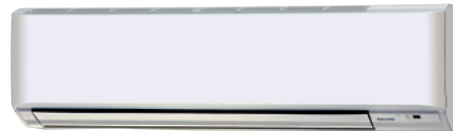
Approval: _____
 Date: _____
 Construction: _____
 Unit#: _____
 Drawing#: _____

Rated Conditions	
Indoor	Outdoor
80°F DB / 67°F WB	95°F DB / 75°F WB
70°F DB / 60°F WB	47°F DB / 43°F WB
70°F DB / 60°F WB	17°F DB / 15°F WB

General Data	
Power (V/P/Hz)	230/208/1/60
Circuit Ampacity (A)	15-30 Indoor-Outdoor
Fuse Size, Max. (A)	15-30 Indoor-Outdoor
Compressor	DC Rotary Inverter
No. Used	1
R.L. Amps - L.R. (A)	12.9 - 17.5

Outdoor Unit	
Fan type	Propeller
No. used	1
Dia & Length (in.)	18-7/64
Type Drive - No. Speeds	DC Motor-Variable
No. Poles (RPM)	8 - 800
No. Motors (W)	1 - 90
CFM (High)	1,766
F.L. Amps (A)	13.8
Coil Type	Aluminum Fin & Copper Pipe
Fin Type - Pipe Type	Slit Plate - Inner Rifled
Rows - F.P.I.	1 - 15.9
Face Area (sq.ft.)	7.26
Tube Size (in)	3/8"

Indoor Unit	
Fan Type	Cross Flow
No. used	1
Diameter	3-15/16"
Length (in.)	33 -15/64"
No. Speeds	3 & Auto
No. Poles (RPM, High)	4-1224
No. Motors (W)	DC 1-29
CFM (Hi/Med/Lo)	650/512/406
Indoor Sound Rating (Hi) (dB-A)	48
F.L. Amps (A)	0.31



Coil Type	Aluminum Plate Fin & Copper Tube
Fin Type - Pipe Type	Slit Plate - Inner Rifled
Rows - Fins per inch	2 - 24.1
Face Area (sq. ft.)	2.57
Tube Size (in.)	9/32"
Drain Connection Size (in.)	1-1/4"
Refrigerant	R410A
Lbs. - R410a	4.2
Control	Electric Expansion Valve
Connection	Flare
Line Length, Max (ft.)	165
Line Difference, Max (ft.)	50 (outdoor lower), 100 (outdoor higher)
Line Size (in. O.D. Discharge)	3/8"
Line Size (in. O.D. Suction)	5/8"
Dimensions (HxWxD)	
Indoor Unit (Uncrated) (in.)	11-3/16 x 41-5/16 x 9-1/16
Outdoor Unit (Uncrated) (in.)	30-23/32 x 37 x 13 3/8
Weight (lbs.)	
{Indoor} Net	32
{Outdoor} Net	128

Performance Data @ ARI Standard Conditions (230/208V)

Cooling	
Total Capacity (BTU/H)	24,000 (9,500 - 24,000)
Sensible Capacity (BTU/H)	16,300
Latent Capacity (BTU/H)	7,700
SEER	16.7
Dehumidification (Pints/H)	5.7
Amps (A)	15.3/16.9
Power Inputs (W)	2,840/2,840
Outdoor Sound Rating (dB-A) High	49
Heating	
High Heating @47°	27,600
Low Heating @17°	15,800
Total Capacity (BTU/H)	27,600 (8,000 - 27,600)
HSPF	10.1
Amps (A)	14/15.5
Max Amps (A)	14/15.5
Power Inputs (W)	2,620/2,620
Back-up Strip Heater (KW)	N/A
Outdoor Sound Rating (dB-A) High	49

Features

Controls	Microprocessor
Remote Controller	Remote Purchased Separately
Temperature Control	Thermostat
Timer	24 Hr. Program
Night Setback	N/A
Air Louver, Horizontal	Manual
Air Louver, Vertical	Automatic
Power Failure Automatic Restart	Built-In
Heating/Cooling Automatic Changeover	Built-In
Self-Diagnosis	Built-In
Air Filter	Washable, Anti-Mold

Options

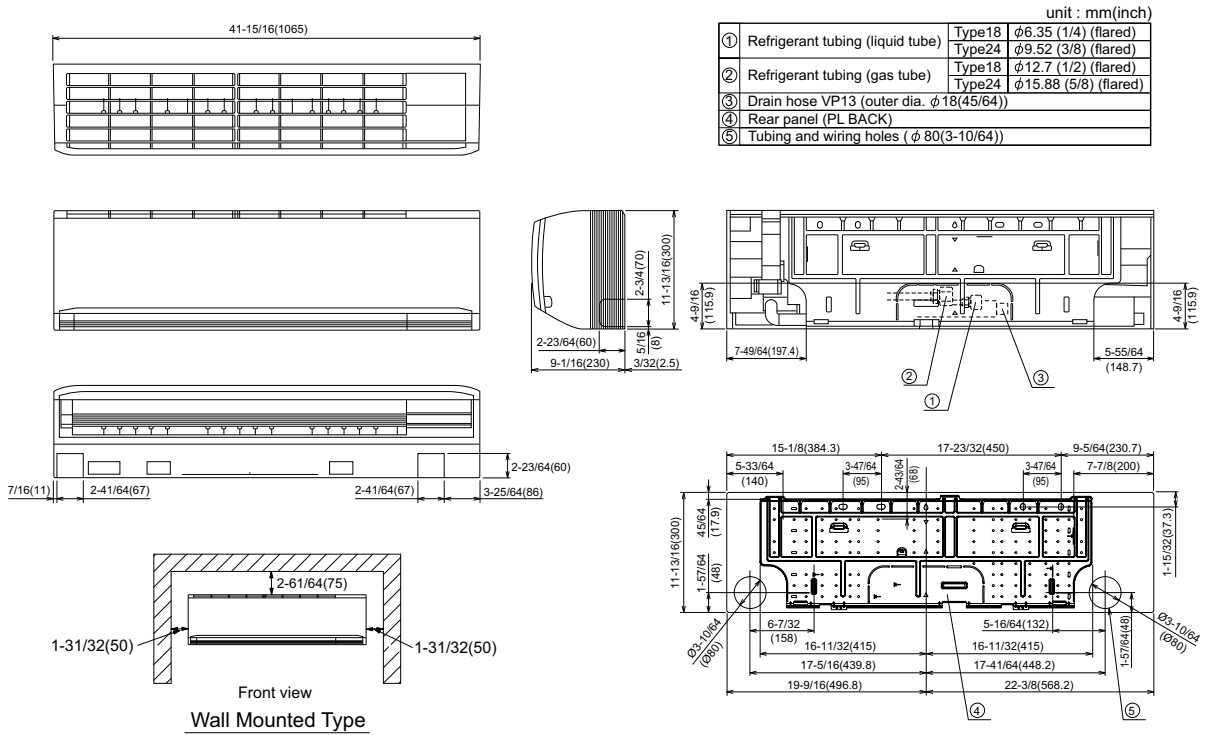
Refrigerant Line Set	Available
Fresh Air Intake	N/A
Econavi Available With Use Of	CZ-RTC3,4,5 & CZ-CENCS1
Indoor Frame Extension	N/A
Condensate Drain Pump	Optional Accessory
Non-Removeable Remo-con Bracket	Available

Operating Range

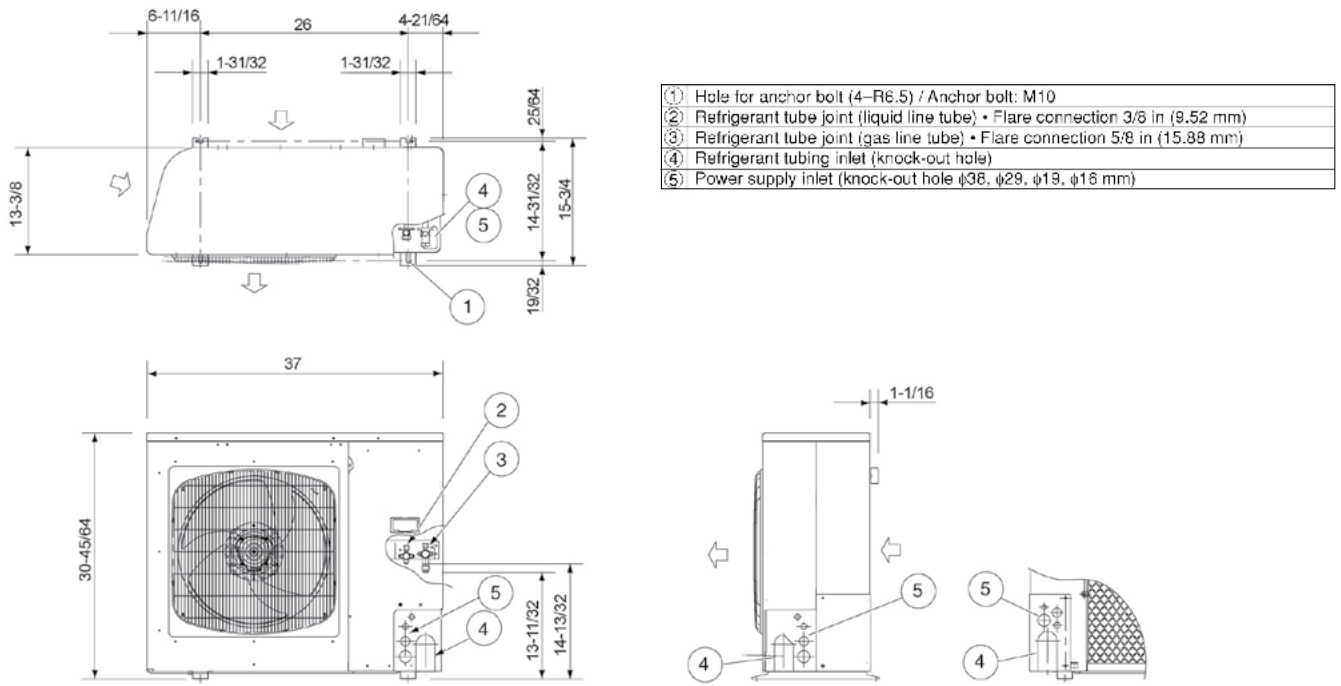
Operating Range	Indoor Air Intake Temp	Outdoor Air Intake Temp
Cooling (Max)	95F DB/71F WB	115F DB
Cooling (Min)	67 DB/57F WB	0F DB (No Lockout)
Heating (Max)	80F DB/67F WB	75F DB/65F WB
Heating (Min)	-DB/-WB	[-4]F DB (No Lockout)



Indoor Dimensions



Outdoor Dimensions



Dimension: inch

Panasonic

Panasonic North America
Air Conditioning Division
1690 Roberts Blvd., NW, Suite 110
Kennesaw, GA 30144
us.panasonic.com/aircon