



Parts List

File No.

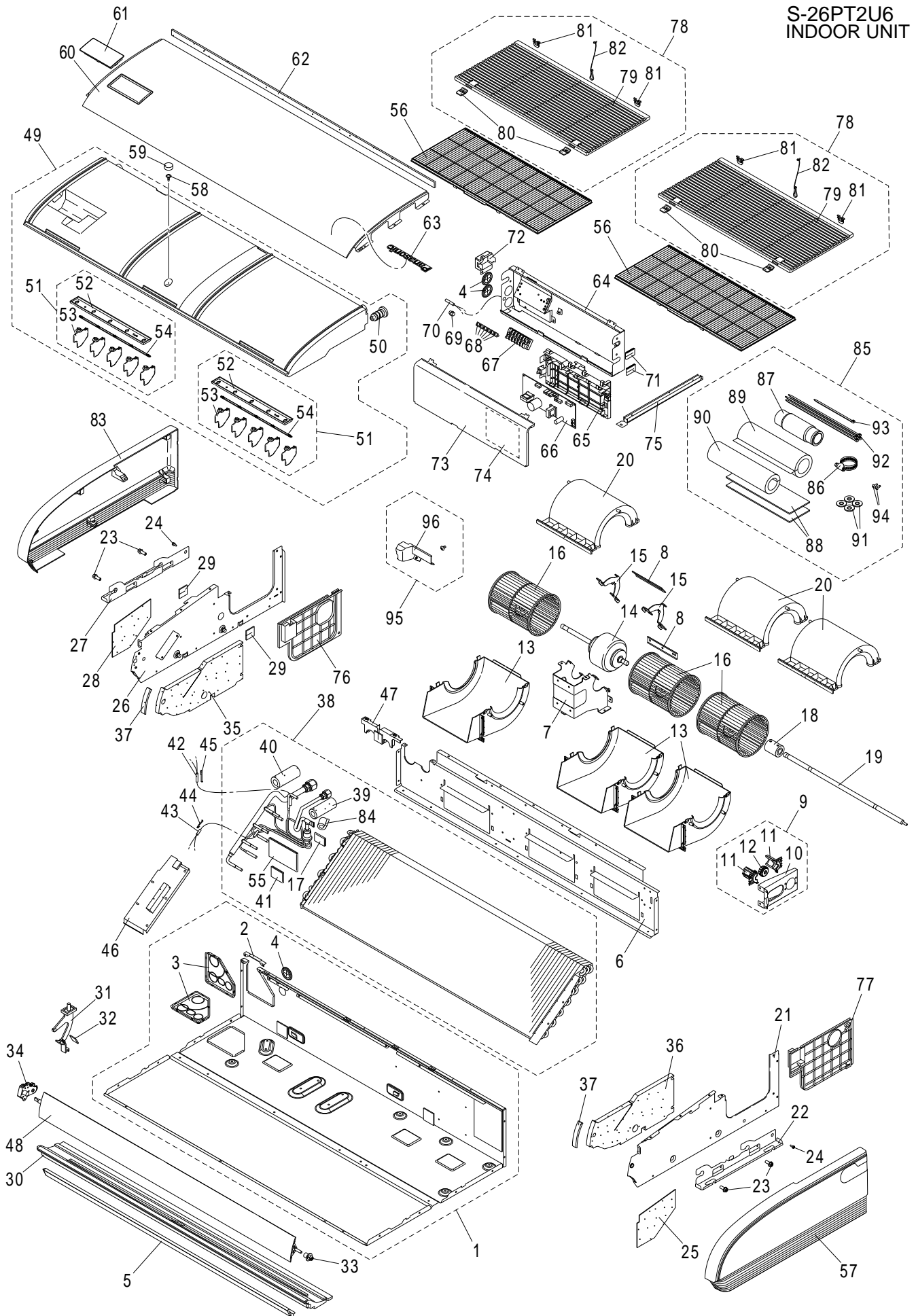
Air Conditioner

REFERENCE No.PL 834725

—— CONTENTS ——

	Model No.	Page
INDOOR UNIT	S-26PT2U6	1
	S-36PT2U6	5
	S-42PT2U6	5

S-26PT2U6
INDOOR UNIT



ATTENTION!

To ensure correct parts supply, please let us know the following.

Part No. when you make service parts order:

S-26PT2U6

1.Part No. 2.Description 3.Q'ty 4.Volts-Hz-Ph 5.Product Model No. INDOOR UNIT

KeyNo.	Description	Q'ty	Reference No.	Available in EyesG21
1	CABINET TOP PLATE-COMplete	1	CWE03C1166	
2	U-SHAPED PIECE	1	CWD721040	o
3	PARTICULAR PLATE	2	CWD912429	o
4	BUSHING	3	CWH51134	o
5	CABINET FRONT PLATE	1	CWE061340A	o
6	BULKHEAD	1	CWD531054	o
7	FAN MOTOR BRACKET	1	CWD541222	o
8	FAN MOTOR BRACKET	2	CWD541223	o
*	9 BLOWER WHEEL-COMplete	1	CWH01C1023	o
10	PARTICULAR PLATE	1	CWD912414	o
11	PARTICULAR PIECE	2	CWD933058	o
*	12 BEARING ASSY	1	CWH64K1019	o
13	AIR GUIDER B.W.	3	CWD321108	o
*	14 DC MOTORS (BRUSHLESS GENERAL USE)	1	L6CBYYL0141	o
15	FAN MOTOR BRACKET	2	CWD541239	o
*	16 BLOWER WHEEL ASSY	3	CWH01K1038	o
17	BUTYL TAPE	1	KG3AF140-140	o
18	CONCECTOR-SHAFT COMPLETE	1	CWH08C1003	o
19	SHAFT	1	CWH631146	o
20	AIR GUIDER B.W.COMplete	3	CWD32C1035	o
21	CABINET SIDE PLATE ASSY	1	CWE04K1172	
22	PARTICULAR PLATE	1	CWD912423A	
23	SCREW	4	CWH551384	o
24	SCREW	2	CWH55406J	o
25	ADH. POLY-E. FOAM	1	CWG123351	o
26	CABINET SIDE PLATE ASSY	1	CWE04K1173	
27	PARTICULAR PLATE	1	CWD912422A	o
28	ADH. POLY-E. FOAM	1	CWG123348	o
29	ADH.EPT SEAL	2	CWG321144	o
30	FOAMED STYRENE COMPLETE	1	CWG07C1079	o
*	31 BEARING-COMplete	1	CWH64C1009	o
32	ADH. POLY-E. FOAM	1	CWG123504	o
*	33 BEARING	1	CWH641020	o
*	34 GEAR-COMplete	1	CWH68C1091	o
35	ADH. POLY-E. FOAM	1	CWG123505	o
36	ADH. POLY-E. FOAM	1	CWG123506	o
37	SHEET	2	CWH861659	o
38	FIN & TUBE EVAPORATER-COMplete	1	CWB30C4969	
39	ADH. POLY-E. FOAM	1	CWG123507	o
40	ADH. POLY-E. FOAM	1	CWG123508	o
41	BUTYL TAPE	1	KG3AF60-100	o
*	42 THERMISTOR (E1) (OD 6.0)	1	CWA50C3036	o
*	43 THERMISTOR (E2) (OD 4.2)	1	CWA50C3037	o
44	PLATE SPRING	1	CWH711013	o
45	PLATE SPRING	1	CWH711010	o

NOTE: Metal and plastic parts will be supplied basically with necessary heat insulation pads or packing. Each key number with an asterisk (*) means the recommended service parts.

ATTENTION!

To ensure correct parts supply, please let us know the following.

Part No. when you make service parts order:

S-26PT2U6

1.Part No. 2.Description 3.Q'ty 4.Volts-Hz-Ph 5.Product Model No. INDOOR UNIT

KeyNo.	Description	Q'ty	Reference No.	Available in EyesG21
46	PARTICULAR PLATE COMPLETE	1	CWD91C0260	
47	PARTICULAR PLATE COMPLETE	1	CWD91C0261	
48	VANE-COMPLETE	1	CWE24C1456	o
49	DRAIN PAN-COMPLETE	1	CWH40C1103	o
50	PLUG	1	CWB821037	o
51	VANE-COMPLETE	2	CWE24C1473	o
52	PARTICULAR PLATE	1	CWD912421	o
53	VANE	10	CWE241419	o
54	CONNECTING BAR	1	CWE261287	o
55	BUTYL TAPE	1	KG3AF120-360	o
*	56 AIR FILTER	2	CWD001406	o
57	CABINET SIDE PLATE	1	CWE041727	o
58	SCREW-COMPLETE	1	CWH55C1042	o
59	POLY-E. FOAM	1	CWG101643	o
60	FRONT PANEL	1	CWE131052A	o
61	LAMP COVER	1	CWE361021	o
62	ADH. POLY-E. FOAM	1	CWG123571	o
63	BADGE	1	CWE374903	o
64	CONTROL BOARD ASSY	1	CWH10K1210	o
65	PARTICULAR PLATE	1	CWD912439	o
*	66 PC BOARD W/COMPONENT	1	CWA73C8687	
*	67 TERMINAL BOARD ASSY	1	CWA28K1253	o
68	SCREW	6	CWH551324	o
69	RUBBER.RESIN OR VINYL	1	CW4690280	o
*	70 THERMISTOR (TA)	1	CWA50C3034	o
71	ADH.EPT SEAL	2	CWG321120	o
72	PARTICULAR PLATE	1	CWD912600	o
73	CONTROL BOARD COVER	1	CWH131604	o
74	WIRING DIAGRAM (CS)	1	CWF204053	o
75	U-SHAPED PLATE-COMPLETE	1	CWD62C1065	
76	PARTICULAR PLATE	1	CWD912418	o
77	PARTICULAR PLATE	1	CWD912419	o
78	INTAKE GRILLE-COMPLETE	2	CWE22C1824	o
79	INTAKE GRILLE	1	CWE221373	o
80	LOCK	2	CWH891003	
81	HINGE	2	CWH611001	o
82	STRING-COMPLETE	1	CWH84C1012	o
83	CABINET SIDE PLATE	1	CWE041728	o
84	ADH. POLY-E. FOAM	1	CWG123509	o
85	ACCESSORY-COMPLETE	1	CWH82C2124	
86	WIRE SPRING	1	CWH722020	o
87	FLEXIBLE PIPE	1	CWH851211	o
88	ADH. POLY-E. FOAM	2	CWG123512	o
89	ADH. POLY-E. FOAM	1	CWG123513	o
90	ADH. POLY-E. FOAM	1	CWG123514	o

NOTE: Metal and plastic parts will be supplied basically with necessary heat insulation pads or packing. Each key number with an asterisk (*) means the recommended service parts.

ATTENTION!

To ensure correct parts supply, please let us know the following.

Part No. when you make service parts order:

S-26PT2U6

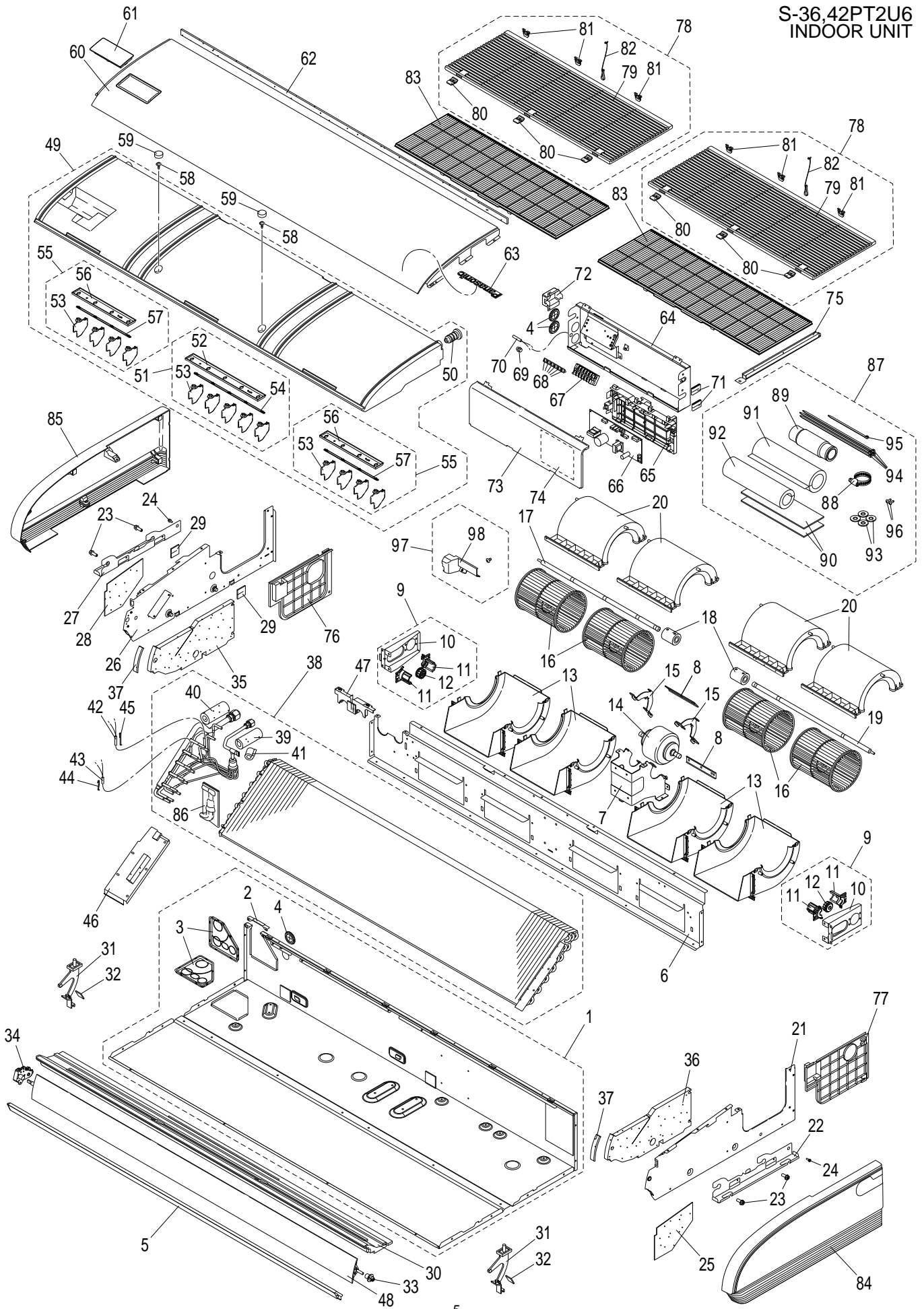
1.Part No. 2.Description 3.Q'ty 4.Volts-Hz-Ph 5.Product Model No.

INDOOR UNIT

KeyNo.	Description	Q'ty	Reference No.	Available in EyesG21
91	WASHER	4	CWH571076	o
92	BAND	4	CWH881070	o
93	BAND	1	CWH881067	o
94	SELF TAPPING SCREW	2	XTT4+12CFJ	o
95	ACCESSORY-COMPLETE	1	CWH82C2169	
96	BOX SHAPED PLATE	1	CWD661320	o
-	OPERATING INSTRUCTION	1	CWF569999	o
-	INSTALLATION INSTRUCTION	1	CWF616837	o

NOTE: Metal and plastic parts will be supplied basically with necessary heat insulation pads or packing. Each key number with an asterisk (*) means the recommended service parts.

S-36.42PT2U6
INDOOR UNIT



ATTENTION!

To ensure correct parts supply, please let us know the following.

Part No. when you make service parts order:

S-36,42PT2U6

1.Part No. 2.Description 3.Q'ty 4.Volts-Hz-Ph 5.Product Model No.

INDOOR UNIT

KeyNo.	Description	36Q'ty	42Q'ty	Reference No.	Available in EyesG21
1	CABINET TOP PLATE-COMLETE	1	1	CWE03C1165	
2	U-SHAPED PIECE	1	1	CWD721040	o
3	PARTICULAR PLATE	2	2	CWD912429	o
4	BUSHING	3	3	CWH51134	o
5	CABINET FRONT PLATE	1	1	CWE061339A	o
6	BULKHEAD	1	1	CWD531053	o
7	FAN MOTOR BRACKET	1	1	CWD541221	o
8	FAN MOTOR BRACKET	2	2	CWD541223	o
*	9 BLOWER WHEEL-COMLETE	2	2	CWH01C1023	o
10	PARTICULAR PLATE	1	1	CWD912414	o
11	PARTICULAR PIECE	2	2	CWD933058	o
*	12 BEARING ASSY	1	1	CWH64K1019	o
13	AIR GUIDER B.W.	4	4	CWD321108	o
*	14 DC MOTORS (BRUSHLESS GENERAL USE)	1	1	L6CBYYYYL0142	o
15	FAN MOTOR BRACKET	2	2	CWD541239	o
*	16 BLOWER WHEEL ASSY	4	4	CWH01K1038	o
17	SHAFT	1	1	CWH631147	o
18	CONCECTOR-SHAFT COMPLETE	2	2	CWH08C1003	o
19	SHAFT	1	1	CWH631146	o
20	AIR GUIDER B.W.COMLETE	4	4	CWD32C1035	o
21	CABINET SIDE PLATE ASSY	1	1	CWE04K1172	
22	PARTICULAR PLATE	1	1	CWD912423A	
23	SCREW	4	4	CWH551384	o
24	SCREW	2	2	CWH55406J	o
25	ADH. POLY-E. FOAM	1	1	CWG123351	o
26	CABINET SIDE PLATE ASSY	1	1	CWE04K1173	
27	PARTICULAR PLATE	1	1	CWD912422A	o
28	ADH. POLY-E. FOAM	1	1	CWG123348	o
29	ADH.EPT SEAL	2	2	CWG321144	o
30	FOAMED STYRENE COMPLETE	1	1	CWG07C1078	o
*	31 BEARING-COMLETE	2	2	CWH64C1009	o
32	ADH. POLY-E. FOAM	2	2	CWG123504	o
*	33 BEARING	1	1	CWH641020	o
*	34 GEAR-COMLETE	1	1	CWH68C1091	o
35	ADH. POLY-E. FOAM	1	1	CWG123505	o
36	ADH. POLY-E. FOAM	1	1	CWG123506	o
37	SHEET	2	2	CWH861659	o
38	FIN & TUBE EVAPORATER-COMLETE	1	1	CWB30C4968	
39	ADH. POLY-E. FOAM	1	1	CWG123507	o
40	ADH. POLY-E. FOAM	1	1	CWG123508	o
41	ADH. POLY-E. FOAM	1	1	CWG123509	o
*	42 THERMISTOR (E1) (OD 6.0)	1	1	CWA50C3036	o
*	43 THERMISTOR (E2) (OD 4.2)	1	1	CWA50C3037	o
44	PLATE SPRING	1	1	CWH711013	o
45	PLATE SPRING	1	1	CWH711010	o

NOTE: Metal and plastic parts will be supplied basically with necessary heat insulation pads or packing. Each key number with an asterisk (*) means the recommended service parts.

ATTENTION!

To ensure correct parts supply, please let us know the following.

Part No. when you make service parts order:

S-36,42PT2U6

1.Part No. 2.Description 3.Q'ty 4.Volts-Hz-Ph 5.Product Model No.

INDOOR UNIT

KeyNo.	Description	36Q'ty	42Q'ty	Reference No.	Available in EyesG21
46	PARTICULAR PLATE COMPLETE	1	1	CWD91C0260	
47	PARTICULAR PLATE COMPLETE	1	1	CWD91C0261	
48	VANE-COMPLETE	1	1	CWE24C1455	o
49	DRAIN PAN-COMPLETE	1	1	CWH40C1102	o
50	PLUG	1	1	CWB821037	o
51	VANE-COMPLETE	1	1	CWE24C1473	o
52	PARTICULAR PLATE	1	1	CWD912421	o
53	VANE	13	13	CWE241419	o
54	CONNECTING BAR	1	1	CWE261287	o
55	VANE-COMPLETE	2	2	CWE24C1478	o
56	PARTICULAR PLATE	1	1	CWD912420	o
57	CONNECTING BAR	1	1	CWE261286	o
58	SCREW-COMPLETE	2	2	CWH55C1042	o
59	POLY-E. FOAM	2	2	CWG101643	o
60	FRONT PANEL	1	1	CWE131051A	o
61	LAMP COVER	1	1	CWE361021	o
62	ADH. POLY-E. FOAM	1	1	CWG123570	o
63	BADGE	1	1	CWE374903	o
64	CONTROL BOARD ASSY	1	1	CWH10K1210	o
65	PARTICULAR PLATE	1	1	CWD912439	o
*	66 PC BOARD W/COMPONENT	1		CWA73C8688	
*	66 PC BOARD W/COMPONENT		1	CWA73C8689	
*	67 TERMINAL BOARD ASSY	1	1	CWA28K1253	o
68	SCREW	6	6	CWH551324	o
69	RUBBER.RESIN OR VINYL	1	1	CW4690280	o
*	70 THERMISTOR (TA)	1	1	CWA50C3034	o
71	ADH.EPT SEAL	2	2	CWG321120	o
72	PARTICULAR PLATE	1	1	CWD912600	o
73	CONTROL BOARD COVER	1	1	CWH131604	o
74	WIRING DIAGRAM (CS)	1	1	CWF204053	o
75	U-SHAPED PLATE-COMPLETE	1	1	CWD62C1065	
76	PARTICULAR PLATE	1	1	CWD912418	o
77	PARTICULAR PLATE	1	1	CWD912419	o
78	INTAKE GRILLE-COMPLETE	2	2	CWE22C1823	o
79	INTAKE GRILLE	1	1	CWE221372	o
80	LOCK	3	3	CWH891003	
81	HINGE	3	3	CWH611001	o
82	STRING-COMPLETE	1	1	CWH84C1012	o
*	83 AIR FILTER	2	2	CWD001405	o
84	CABINET SIDE PLATE	1	1	CWE041727	o
85	CABINET SIDE PLATE	1	1	CWE041728	o
86	BUTYL TAPE	1	1	KG3AF140-140	o
87	ACCESSORY-COMPLETE	1	1	CWH82C2124	
88	WIRE SPRING	1	1	CWH722020	o
89	FLEXIBLE PIPE	1	1	CWH851211	o

NOTE: Metal and plastic parts will be supplied basically with necessary heat insulation pads or packing. Each key number with an asterisk (*) means the recommended service parts.

ATTENTION!

To ensure correct parts supply, please let us know the following.

Part No. when you make service parts order:

S-36,42PT2U6

1.Part No. 2.Description 3.Q'ty 4.Volts-Hz-Ph 5.Product Model No.

INDOOR UNIT

KeyNo.	Description	36Q'ty	42Q'ty	Reference No.	Available in EyesG21
90	ADH. POLY-E. FOAM	2	2	CWG123512	o
91	ADH. POLY-E. FOAM	1	1	CWG123513	o
92	ADH. POLY-E. FOAM	1	1	CWG123514	o
93	WASHER	4	4	CWH571076	o
94	BAND	4	4	CWH881070	o
95	BAND	1	1	CWH881067	o
96	SELF TAPPING SCREW	2	2	XTT4+12CFJ	o
97	ACCESSORY-COMPLETE	1	1	CWH82C2169	
98	BOX SHAPED PLATE	1	1	CWD661320	o
-	OPERATING INSTRUCTION	1	1	CWF569999	o
-	INSTALLATION INSTRUCTION	1	1	CWF616837	o

NOTE: Metal and plastic parts will be supplied basically with necessary heat insulation pads or packing. Each key number with an asterisk (*) means the recommended service parts.