



# Parts List

File No.

# Air Conditioner

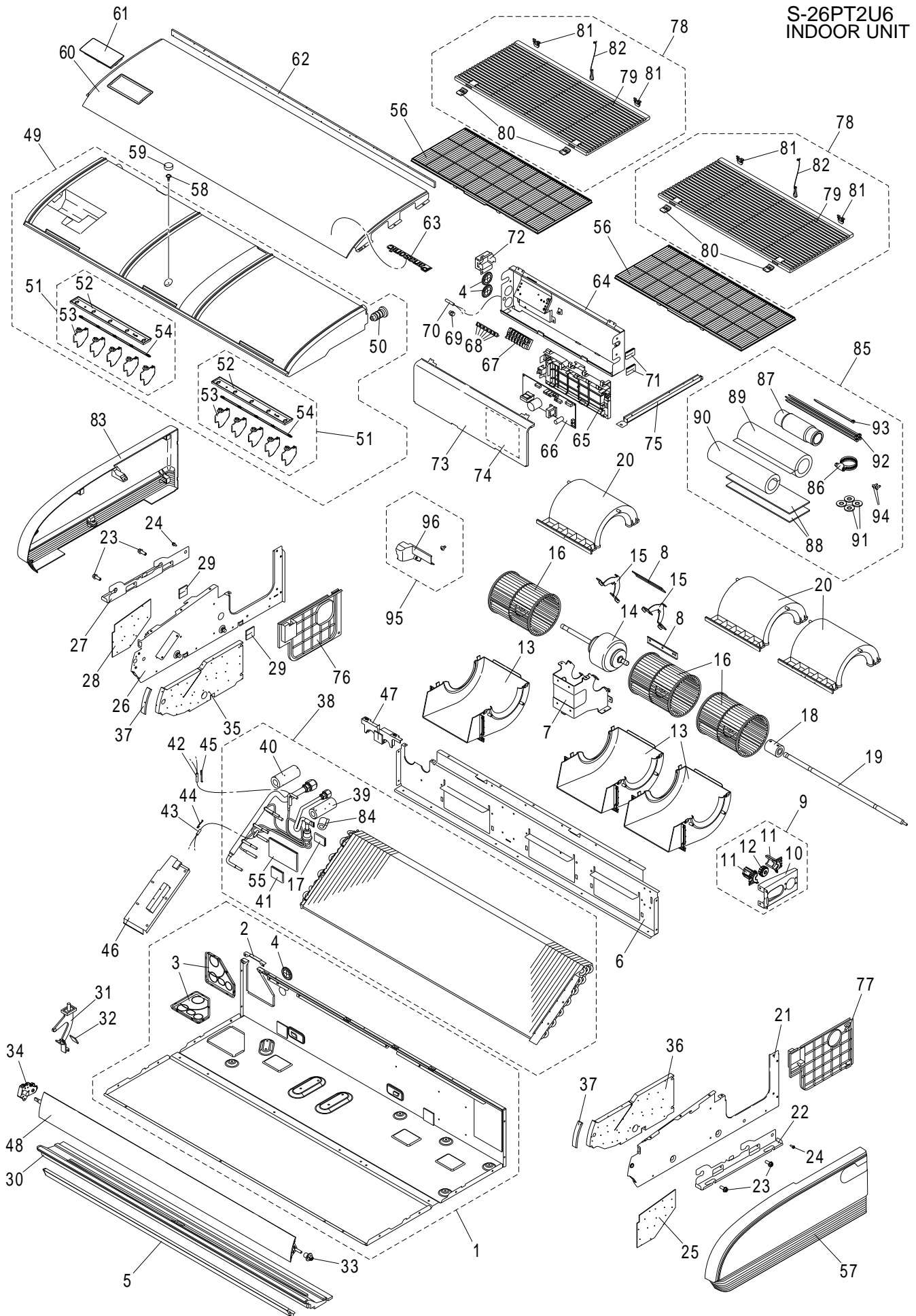
---

REFERENCE No.PL 834725

—— CONTENTS ——

|             | Model No. | Page |
|-------------|-----------|------|
| INDOOR UNIT | S-26PT2U6 | 1    |
|             | S-36PT2U6 | 5    |
|             | S-42PT2U6 | 5    |

S-26PT2U6  
INDOOR UNIT



## ATTENTION!

To ensure correct parts supply, please let us know the following.

Part No. when you make service parts order:

S-26PT2U6

1.Part No. 2.Description 3.Q'ty 4.Volts-Hz-Ph 5.Product Model No. INDOOR UNIT

| KeyNo. | Description                          | Q'ty | Reference No. | Available in EyesG21 |
|--------|--------------------------------------|------|---------------|----------------------|
| 1      | CABINET TOP PLATE-COMplete           | 1    | CWE03C1166    |                      |
| 2      | U-SHAPED PIECE                       | 1    | CWD721040     | o                    |
| 3      | PARTICULAR PLATE                     | 2    | CWD912429     | o                    |
| 4      | BUSHING                              | 3    | CWH51134      | o                    |
| 5      | CABINET FRONT PLATE                  | 1    | CWE061340A    | o                    |
| 6      | BULKHEAD                             | 1    | CWD531054     | o                    |
| 7      | FAN MOTOR BRACKET                    | 1    | CWD541222     | o                    |
| 8      | FAN MOTOR BRACKET                    | 2    | CWD541223     | o                    |
| *      | 9 BLOWER WHEEL-COMplete              | 1    | CWH01C1023    | o                    |
| 10     | PARTICULAR PLATE                     | 1    | CWD912414     | o                    |
| 11     | PARTICULAR PIECE                     | 2    | CWD933058     | o                    |
| *      | 12 BEARING ASSY                      | 1    | CWH64K1019    | o                    |
| 13     | AIR GUIDER B.W.                      | 3    | CWD321108     | o                    |
| *      | 14 DC MOTORS (BRUSHLESS GENERAL USE) | 1    | L6CBYYL0141   | o                    |
| 15     | FAN MOTOR BRACKET                    | 2    | CWD541239     | o                    |
| *      | 16 BLOWER WHEEL ASSY                 | 3    | CWH01K1038    | o                    |
| 17     | BUTYL TAPE                           | 1    | KG3AF140-140  | o                    |
| 18     | CONCECTOR-SHAFT COMPLETE             | 1    | CWH08C1003    | o                    |
| 19     | SHAFT                                | 1    | CWH631146     | o                    |
| 20     | AIR GUIDER B.W.COMplete              | 3    | CWD32C1035    | o                    |
| 21     | CABINET SIDE PLATE ASSY              | 1    | CWE04K1172    |                      |
| 22     | PARTICULAR PLATE                     | 1    | CWD912423A    |                      |
| 23     | SCREW                                | 4    | CWH551384     | o                    |
| 24     | SCREW                                | 2    | CWH55406J     | o                    |
| 25     | ADH. POLY-E. FOAM                    | 1    | CWG123351     | o                    |
| 26     | CABINET SIDE PLATE ASSY              | 1    | CWE04K1173    |                      |
| 27     | PARTICULAR PLATE                     | 1    | CWD912422A    | o                    |
| 28     | ADH. POLY-E. FOAM                    | 1    | CWG123348     | o                    |
| 29     | ADH.EPT SEAL                         | 2    | CWG321144     | o                    |
| 30     | FOAMED STYRENE COMPLETE              | 1    | CWG07C1079    | o                    |
| *      | 31 BEARING-COMplete                  | 1    | CWH64C1009    | o                    |
| 32     | ADH. POLY-E. FOAM                    | 1    | CWG123504     | o                    |
| *      | 33 BEARING                           | 1    | CWH641020     | o                    |
| *      | 34 GEAR-COMplete                     | 1    | CWH68C1091    | o                    |
| 35     | ADH. POLY-E. FOAM                    | 1    | CWG123505     | o                    |
| 36     | ADH. POLY-E. FOAM                    | 1    | CWG123506     | o                    |
| 37     | SHEET                                | 2    | CWH861659     | o                    |
| 38     | FIN & TUBE EVAPORATER-COMplete       | 1    | CWB30C4969    |                      |
| 39     | ADH. POLY-E. FOAM                    | 1    | CWG123507     | o                    |
| 40     | ADH. POLY-E. FOAM                    | 1    | CWG123508     | o                    |
| 41     | BUTYL TAPE                           | 1    | KG3AF60-100   | o                    |
| *      | 42 THERMISTOR (E1) (OD 6.0)          | 1    | CWA50C3036    | o                    |
| *      | 43 THERMISTOR (E2) (OD 4.2)          | 1    | CWA50C3037    | o                    |
| 44     | PLATE SPRING                         | 1    | CWH711013     | o                    |
| 45     | PLATE SPRING                         | 1    | CWH711010     | o                    |

NOTE: Metal and plastic parts will be supplied basically with necessary heat insulation pads or packing. Each key number with an asterisk (\*) means the recommended service parts.

## ATTENTION!

To ensure correct parts supply, please let us know the following.

Part No. when you make service parts order:

S-26PT2U6

1.Part No. 2.Description 3.Q'ty 4.Volts-Hz-Ph 5.Product Model No. INDOOR UNIT

| KeyNo. | Description               | Q'ty | Reference No. | Available in EyesG21 |
|--------|---------------------------|------|---------------|----------------------|
| 46     | PARTICULAR PLATE COMPLETE | 1    | CWD91C0260    |                      |
| 47     | PARTICULAR PLATE COMPLETE | 1    | CWD91C0261    |                      |
| 48     | VANE-COMplete             | 1    | CWE24C1456    | o                    |
| 49     | DRAIN PAN-COMplete        | 1    | CWH40C1103    | o                    |
| 50     | PLUG                      | 1    | CWB821037     | o                    |
| 51     | VANE-COMplete             | 2    | CWE24C1473    | o                    |
| 52     | PARTICULAR PLATE          | 1    | CWD912421     | o                    |
| 53     | VANE                      | 10   | CWE241419     | o                    |
| 54     | CONNECTING BAR            | 1    | CWE261287     | o                    |
| 55     | BUTYL TAPE                | 1    | KG3AF120-360  | o                    |
| *      | 56 AIR FILTER             | 2    | CWD001406     | o                    |
| 57     | CABINET SIDE PLATE        | 1    | CWE041727     | o                    |
| 58     | SCREW-COMplete            | 1    | CWH55C1042    | o                    |
| 59     | POLY-E. FOAM              | 1    | CWG101643     | o                    |
| 60     | FRONT PANEL               | 1    | CWE131052A    | o                    |
| 61     | LAMP COVER                | 1    | CWE361021     | o                    |
| 62     | ADH. POLY-E. FOAM         | 1    | CWG123571     | o                    |
| 63     | BADGE                     | 1    | CWE374903     | o                    |
| 64     | CONTROL BOARD ASSY        | 1    | CWH10K1210    | o                    |
| 65     | PARTICULAR PLATE          | 1    | CWD912439     | o                    |
| *      | 66 PC BOARD W/COMPONENT   | 1    | CWA73C8687    |                      |
| *      | 67 TERMINAL BOARD ASSY    | 1    | CWA28K1253    | o                    |
| 68     | SCREW                     | 6    | CWH551324     | o                    |
| 69     | RUBBER.RESIN OR VINYL     | 1    | CW4690280     | o                    |
| *      | 70 THERMISTOR (TA)        | 1    | CWA50C3034    | o                    |
| 71     | ADH.EPT SEAL              | 2    | CWG321120     | o                    |
| 72     | PARTICULAR PLATE          | 1    | CWD912600     | o                    |
| 73     | CONTROL BOARD COVER       | 1    | CWH131604     | o                    |
| 74     | WIRING DIAGRAM (CS)       | 1    | CWF204053     | o                    |
| 75     | U-SHAPED PLATE-COMplete   | 1    | CWD62C1065    |                      |
| 76     | PARTICULAR PLATE          | 1    | CWD912418     | o                    |
| 77     | PARTICULAR PLATE          | 1    | CWD912419     | o                    |
| 78     | INTAKE GRILLE-COMplete    | 2    | CWE22C1824    | o                    |
| 79     | INTAKE GRILLE             | 1    | CWE221373     | o                    |
| 80     | LOCK                      | 2    | CWH891003     |                      |
| 81     | HINGE                     | 2    | CWH611001     | o                    |
| 82     | STRING-COMplete           | 1    | CWH84C1012    | o                    |
| 83     | CABINET SIDE PLATE        | 1    | CWE041728     | o                    |
| 84     | ADH. POLY-E. FOAM         | 1    | CWG123509     | o                    |
| 85     | ACCESSORY-COMplete        | 1    | CWH82C2124    |                      |
| 86     | WIRE SPRING               | 1    | CWH722020     | o                    |
| 87     | FLEXIBLE PIPE             | 1    | CWH851211     | o                    |
| 88     | ADH. POLY-E. FOAM         | 2    | CWG123512     | o                    |
| 89     | ADH. POLY-E. FOAM         | 1    | CWG123513     | o                    |
| 90     | ADH. POLY-E. FOAM         | 1    | CWG123514     | o                    |

NOTE: Metal and plastic parts will be supplied basically with necessary heat insulation pads or packing. Each key number with an asterisk (\*) means the recommended service parts.

**ATTENTION!**

To ensure correct parts supply, please let us know the following.

Part No. when you make service parts order:

S-26PT2U6

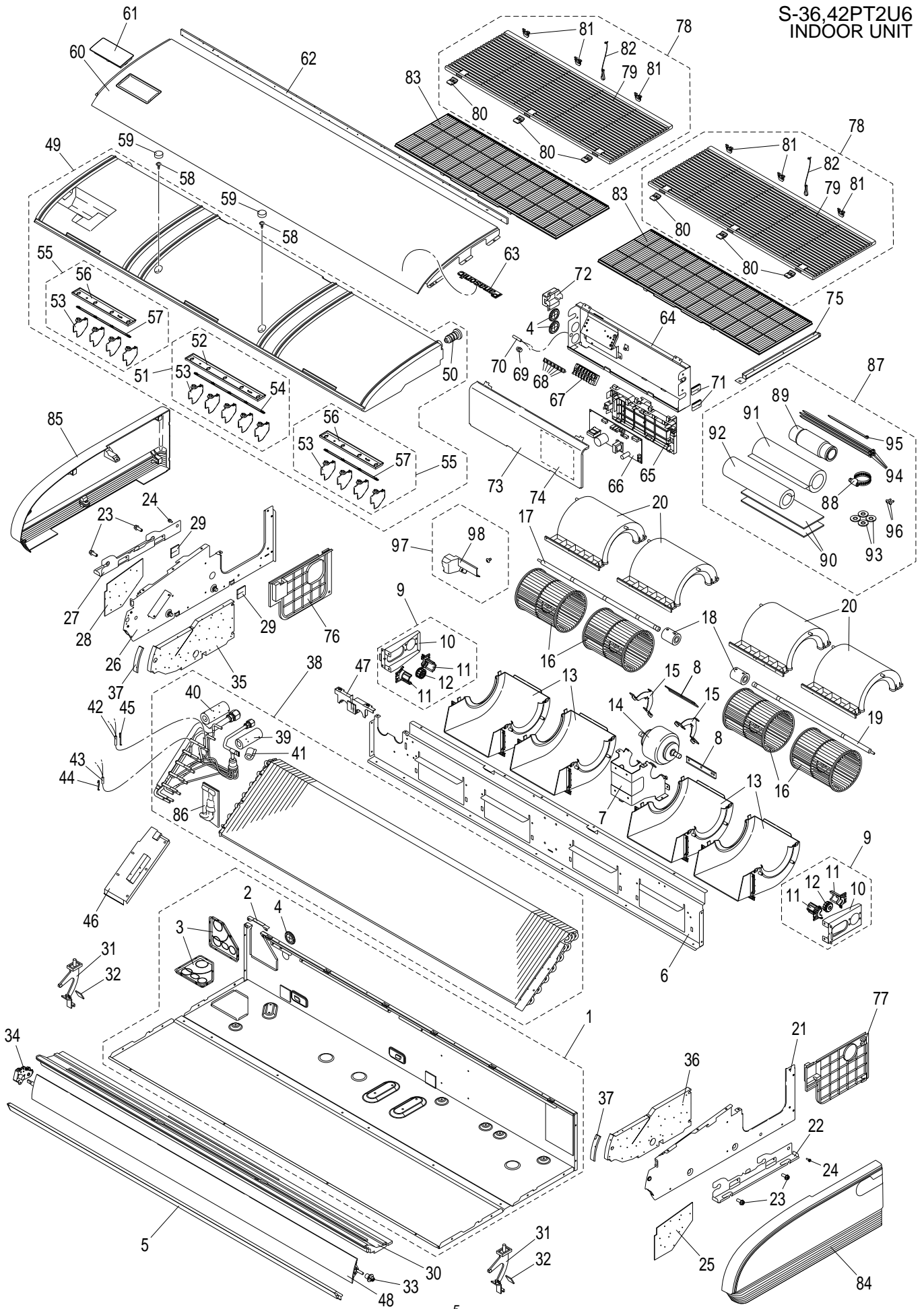
1.Part No. 2.Description 3.Q'ty 4.Volts-Hz-Ph 5.Product Model No.

INDOOR UNIT

| KeyNo. | Description              | Q'ty | Reference No. | Available in EyesG21 |
|--------|--------------------------|------|---------------|----------------------|
| 91     | WASHER                   | 4    | CWH571076     | o                    |
| 92     | BAND                     | 4    | CWH881070     | o                    |
| 93     | BAND                     | 1    | CWH881067     | o                    |
| 94     | SELF TAPPING SCREW       | 2    | XTT4+12CFJ    | o                    |
| 95     | ACCESSORY-COMPLETE       | 1    | CWH82C2169    |                      |
| 96     | BOX SHAPED PLATE         | 1    | CWD661320     | o                    |
| -      | OPERATING INSTRUCTION    | 1    | CWF569999     | o                    |
| -      | INSTALLATION INSTRUCTION | 1    | CWF616837     | o                    |

NOTE: Metal and plastic parts will be supplied basically with necessary heat insulation pads or packing. Each key number with an asterisk (\*) means the recommended service parts.

S-36.42PT2U6  
INDOOR UNIT



## ATTENTION!

To ensure correct parts supply, please let us know the following.

Part No. when you make service parts order:

S-36,42PT2U6

1.Part No. 2.Description 3.Q'ty 4.Volts-Hz-Ph 5.Product Model No.

INDOOR UNIT

| KeyNo. | Description                          | 36Q'ty | 42Q'ty | Reference No. | Available in EyesG21 |
|--------|--------------------------------------|--------|--------|---------------|----------------------|
| 1      | CABINET TOP PLATE-COMLETE            | 1      | 1      | CWE03C1165    |                      |
| 2      | U-SHAPED PIECE                       | 1      | 1      | CWD721040     | o                    |
| 3      | PARTICULAR PLATE                     | 2      | 2      | CWD912429     | o                    |
| 4      | BUSHING                              | 3      | 3      | CWH51134      | o                    |
| 5      | CABINET FRONT PLATE                  | 1      | 1      | CWE061339A    | o                    |
| 6      | BULKHEAD                             | 1      | 1      | CWD531053     | o                    |
| 7      | FAN MOTOR BRACKET                    | 1      | 1      | CWD541221     | o                    |
| 8      | FAN MOTOR BRACKET                    | 2      | 2      | CWD541223     | o                    |
| *      | 9 BLOWER WHEEL-COMLETE               | 2      | 2      | CWH01C1023    | o                    |
| 10     | PARTICULAR PLATE                     | 1      | 1      | CWD912414     | o                    |
| 11     | PARTICULAR PIECE                     | 2      | 2      | CWD933058     | o                    |
| *      | 12 BEARING ASSY                      | 1      | 1      | CWH64K1019    | o                    |
| 13     | AIR GUIDER B.W.                      | 4      | 4      | CWD321108     | o                    |
| *      | 14 DC MOTORS (BRUSHLESS GENERAL USE) | 1      | 1      | L6CBYYYYL0142 | o                    |
| 15     | FAN MOTOR BRACKET                    | 2      | 2      | CWD541239     | o                    |
| *      | 16 BLOWER WHEEL ASSY                 | 4      | 4      | CWH01K1038    | o                    |
| 17     | SHAFT                                | 1      | 1      | CWH631147     | o                    |
| 18     | CONCECTOR-SHAFT COMPLETE             | 2      | 2      | CWH08C1003    | o                    |
| 19     | SHAFT                                | 1      | 1      | CWH631146     | o                    |
| 20     | AIR GUIDER B.W.COMLETE               | 4      | 4      | CWD32C1035    | o                    |
| 21     | CABINET SIDE PLATE ASSY              | 1      | 1      | CWE04K1172    |                      |
| 22     | PARTICULAR PLATE                     | 1      | 1      | CWD912423A    |                      |
| 23     | SCREW                                | 4      | 4      | CWH551384     | o                    |
| 24     | SCREW                                | 2      | 2      | CWH55406J     | o                    |
| 25     | ADH. POLY-E. FOAM                    | 1      | 1      | CWG123351     | o                    |
| 26     | CABINET SIDE PLATE ASSY              | 1      | 1      | CWE04K1173    |                      |
| 27     | PARTICULAR PLATE                     | 1      | 1      | CWD912422A    | o                    |
| 28     | ADH. POLY-E. FOAM                    | 1      | 1      | CWG123348     | o                    |
| 29     | ADH.EPT SEAL                         | 2      | 2      | CWG321144     | o                    |
| 30     | FOAMED STYRENE COMPLETE              | 1      | 1      | CWG07C1078    | o                    |
| *      | 31 BEARING-COMLETE                   | 2      | 2      | CWH64C1009    | o                    |
| 32     | ADH. POLY-E. FOAM                    | 2      | 2      | CWG123504     | o                    |
| *      | 33 BEARING                           | 1      | 1      | CWH641020     | o                    |
| *      | 34 GEAR-COMLETE                      | 1      | 1      | CWH68C1091    | o                    |
| 35     | ADH. POLY-E. FOAM                    | 1      | 1      | CWG123505     | o                    |
| 36     | ADH. POLY-E. FOAM                    | 1      | 1      | CWG123506     | o                    |
| 37     | SHEET                                | 2      | 2      | CWH861659     | o                    |
| 38     | FIN & TUBE EVAPORATER-COMLETE        | 1      | 1      | CWB30C4968    |                      |
| 39     | ADH. POLY-E. FOAM                    | 1      | 1      | CWG123507     | o                    |
| 40     | ADH. POLY-E. FOAM                    | 1      | 1      | CWG123508     | o                    |
| 41     | ADH. POLY-E. FOAM                    | 1      | 1      | CWG123509     | o                    |
| *      | 42 THERMISTOR (E1) (OD 6.0)          | 1      | 1      | CWA50C3036    | o                    |
| *      | 43 THERMISTOR (E2) (OD 4.2)          | 1      | 1      | CWA50C3037    | o                    |
| 44     | PLATE SPRING                         | 1      | 1      | CWH711013     | o                    |
| 45     | PLATE SPRING                         | 1      | 1      | CWH711010     | o                    |

NOTE: Metal and plastic parts will be supplied basically with necessary heat insulation pads or packing. Each key number with an asterisk (\*) means the recommended service parts.



## ATTENTION!

To ensure correct parts supply, please let us know the following.

Part No. when you make service parts order:

S-36,42PT2U6

1.Part No. 2.Description 3.Q'ty 4.Volts-Hz-Ph 5.Product Model No.

INDOOR UNIT

| KeyNo. | Description               | 36Q'ty | 42Q'ty | Reference No. | Available in EyesG21 |
|--------|---------------------------|--------|--------|---------------|----------------------|
| 46     | PARTICULAR PLATE COMPLETE | 1      | 1      | CWD91C0260    |                      |
| 47     | PARTICULAR PLATE COMPLETE | 1      | 1      | CWD91C0261    |                      |
| 48     | VANE-COMPLETE             | 1      | 1      | CWE24C1455    | o                    |
| 49     | DRAIN PAN-COMPLETE        | 1      | 1      | CWH40C1102    | o                    |
| 50     | PLUG                      | 1      | 1      | CWB821037     | o                    |
| 51     | VANE-COMPLETE             | 1      | 1      | CWE24C1473    | o                    |
| 52     | PARTICULAR PLATE          | 1      | 1      | CWD912421     | o                    |
| 53     | VANE                      | 13     | 13     | CWE241419     | o                    |
| 54     | CONNECTING BAR            | 1      | 1      | CWE261287     | o                    |
| 55     | VANE-COMPLETE             | 2      | 2      | CWE24C1478    | o                    |
| 56     | PARTICULAR PLATE          | 1      | 1      | CWD912420     | o                    |
| 57     | CONNECTING BAR            | 1      | 1      | CWE261286     | o                    |
| 58     | SCREW-COMPLETE            | 2      | 2      | CWH55C1042    | o                    |
| 59     | POLY-E. FOAM              | 2      | 2      | CWG101643     | o                    |
| 60     | FRONT PANEL               | 1      | 1      | CWE131051A    | o                    |
| 61     | LAMP COVER                | 1      | 1      | CWE361021     | o                    |
| 62     | ADH. POLY-E. FOAM         | 1      | 1      | CWG123570     | o                    |
| 63     | BADGE                     | 1      | 1      | CWE374903     | o                    |
| 64     | CONTROL BOARD ASSY        | 1      | 1      | CWH10K1210    | o                    |
| 65     | PARTICULAR PLATE          | 1      | 1      | CWD912439     | o                    |
| *      | 66 PC BOARD W/COMPONENT   | 1      |        | CWA73C8688    |                      |
| *      | 66 PC BOARD W/COMPONENT   |        | 1      | CWA73C8689    |                      |
| *      | 67 TERMINAL BOARD ASSY    | 1      | 1      | CWA28K1253    | o                    |
| 68     | SCREW                     | 6      | 6      | CWH551324     | o                    |
| 69     | RUBBER.RESIN OR VINYL     | 1      | 1      | CW4690280     | o                    |
| *      | 70 THERMISTOR (TA)        | 1      | 1      | CWA50C3034    | o                    |
| 71     | ADH.EPT SEAL              | 2      | 2      | CWG321120     | o                    |
| 72     | PARTICULAR PLATE          | 1      | 1      | CWD912600     | o                    |
| 73     | CONTROL BOARD COVER       | 1      | 1      | CWH131604     | o                    |
| 74     | WIRING DIAGRAM (CS)       | 1      | 1      | CWF204053     | o                    |
| 75     | U-SHAPED PLATE-COMPLETE   | 1      | 1      | CWD62C1065    |                      |
| 76     | PARTICULAR PLATE          | 1      | 1      | CWD912418     | o                    |
| 77     | PARTICULAR PLATE          | 1      | 1      | CWD912419     | o                    |
| 78     | INTAKE GRILLE-COMPLETE    | 2      | 2      | CWE22C1823    | o                    |
| 79     | INTAKE GRILLE             | 1      | 1      | CWE221372     | o                    |
| 80     | LOCK                      | 3      | 3      | CWH891003     |                      |
| 81     | HINGE                     | 3      | 3      | CWH611001     | o                    |
| 82     | STRING-COMPLETE           | 1      | 1      | CWH84C1012    | o                    |
| *      | 83 AIR FILTER             | 2      | 2      | CWD001405     | o                    |
| 84     | CABINET SIDE PLATE        | 1      | 1      | CWE041727     | o                    |
| 85     | CABINET SIDE PLATE        | 1      | 1      | CWE041728     | o                    |
| 86     | BUTYL TAPE                | 1      | 1      | KG3AF140-140  | o                    |
| 87     | ACCESSORY-COMPLETE        | 1      | 1      | CWH82C2124    |                      |
| 88     | WIRE SPRING               | 1      | 1      | CWH722020     | o                    |
| 89     | FLEXIBLE PIPE             | 1      | 1      | CWH851211     | o                    |

NOTE: Metal and plastic parts will be supplied basically with necessary heat insulation pads or packing. Each key number with an asterisk (\*) means the recommended service parts.

**ATTENTION!**

To ensure correct parts supply, please let us know the following.

Part No. when you make service parts order:

S-36,42PT2U6

1.Part No. 2.Description 3.Q'ty 4.Volts-Hz-Ph 5.Product Model No.

INDOOR UNIT

| KeyNo. | Description              | 36Q'ty | 42Q'ty | Reference No. | Available in EyesG21 |
|--------|--------------------------|--------|--------|---------------|----------------------|
| 90     | ADH. POLY-E. FOAM        | 2      | 2      | CWG123512     | o                    |
| 91     | ADH. POLY-E. FOAM        | 1      | 1      | CWG123513     | o                    |
| 92     | ADH. POLY-E. FOAM        | 1      | 1      | CWG123514     | o                    |
| 93     | WASHER                   | 4      | 4      | CWH571076     | o                    |
| 94     | BAND                     | 4      | 4      | CWH881070     | o                    |
| 95     | BAND                     | 1      | 1      | CWH881067     | o                    |
| 96     | SELF TAPPING SCREW       | 2      | 2      | XTT4+12CFJ    | o                    |
| 97     | ACCESSORY-COMPLETE       | 1      | 1      | CWH82C2169    |                      |
| 98     | BOX SHAPED PLATE         | 1      | 1      | CWD661320     | o                    |
| -      | OPERATING INSTRUCTION    | 1      | 1      | CWF569999     | o                    |
| -      | INSTALLATION INSTRUCTION | 1      | 1      | CWF616837     | o                    |

NOTE: Metal and plastic parts will be supplied basically with necessary heat insulation pads or packing. Each key number with an asterisk (\*) means the recommended service parts.