

## Split System Submittal Data

### CS-ME5RKUA

#### Multi Split Indoor Unit

Job Name: \_\_\_\_\_  
 Location: \_\_\_\_\_  
 Engineer: \_\_\_\_\_  
 Submitted to: \_\_\_\_\_  
 Submitted by: \_\_\_\_\_  
 Reference: \_\_\_\_\_

Approval: \_\_\_\_\_  
 Date: \_\_\_\_\_  
 Construction: \_\_\_\_\_  
 Unit#: \_\_\_\_\_  
 Drawing#: \_\_\_\_\_

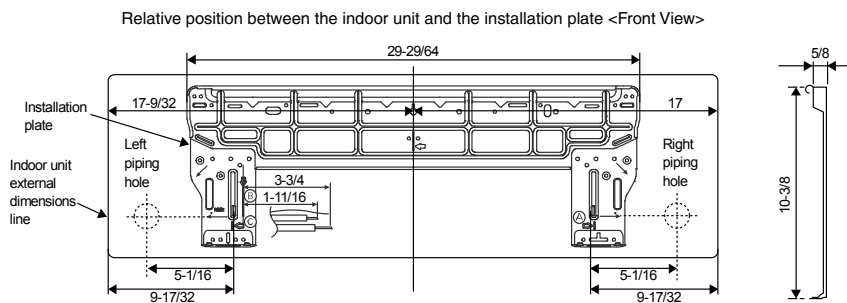
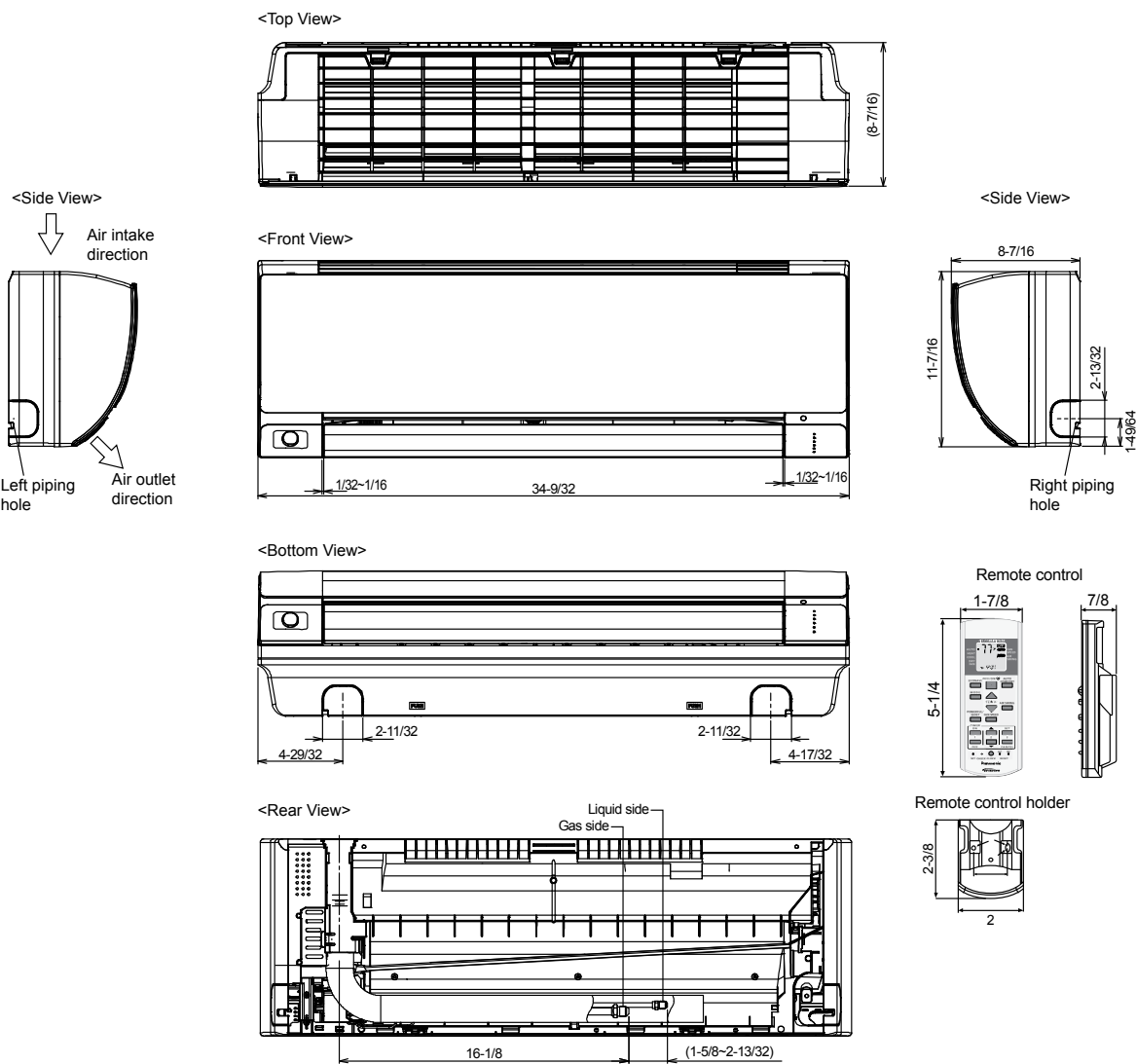
General Data	
<b>Power (V/P/Hz)</b>	<b>230/208/1/60</b>
Circuit Ampacity (A)	15
Fuse Size, Max.(A)	15
Indoor Unit	
Fan Type	Cross Flow
Motor Type, No. of Poles	DC Brushless, 8 poles
No. Speeds	Variable speed
RPM (Cool / Heat), High	1210/1340
No. Motors (W)	1-47
CFM (Qlo/Lo/Me/Hi/SHi) Cooling	222/261/340/425/459
CFM (Qlo/Lo/Me/Hi/SHi) Heating	250/290/373/455/491
Operating Sound-Hi/Me/Lo/ dB-A (Cool)	40/25/20
Operating Sound-Hi/Me/Lo/ dB-A (Cool)	42/29/26
Coil Type	Aluminum Plate Fin & Copper Tube
Fin Type - Pipe Type	Coated Slit Plate - Inner Rifled
Row x stage x FPI	2 x 15 x 21
Size	1 x 12-13/32 x 24
Tube Size (in.)	9/32"
Drain Connection Size (in.)	3/4"
Refrigerant	
Refrigerant	R410A
Refrigerant Tubing Connections	Flare
Line Length, Max (ft.)	82
Elevation Difference, Max (ft.)	49.2
Line Size (in. O.D. Discharge)	1/4"
Line Size (in. O.D. Suction)	3/8"
Dimensions (HxWxD)	
Indoor Unit (Uncrated) (in.)	11-7/16 x 34-9/32 x 8-7/16
Weight (lbs.)	
(Indoor) Net	20 lbs



Features	
Controls	Microprocessor
Remote Controller	LCD Wireless Type included as standard
Wired Remote Controller	Optional CZ-RD516C-1
Temperature Control	IC Thermistor
Timer	Single Event Daily ON/OFF TIMER
Quiet mode	Included
High Power mode	Included
Air Louver, Horizontal	Manual
Air Louver, Vertical	Automatic, Sweep, Step
Power Failure Automatic Restart	Built-In
Heating/Cooling Automatic Changeover	Built-In
Self-Diagnosis	Built-In
Air Filter	Washable, One-touch

Operating Range	Indoor Air Intake Temp
Cooling (Max)	89.6F DB/73.4F WB
Cooling (Min)	60.8F DB/51.8F WB
Heating (Max)	86.0F DB
Heating (Min)	60.8 DB

# Indoor Dimensions



Unit: inch

