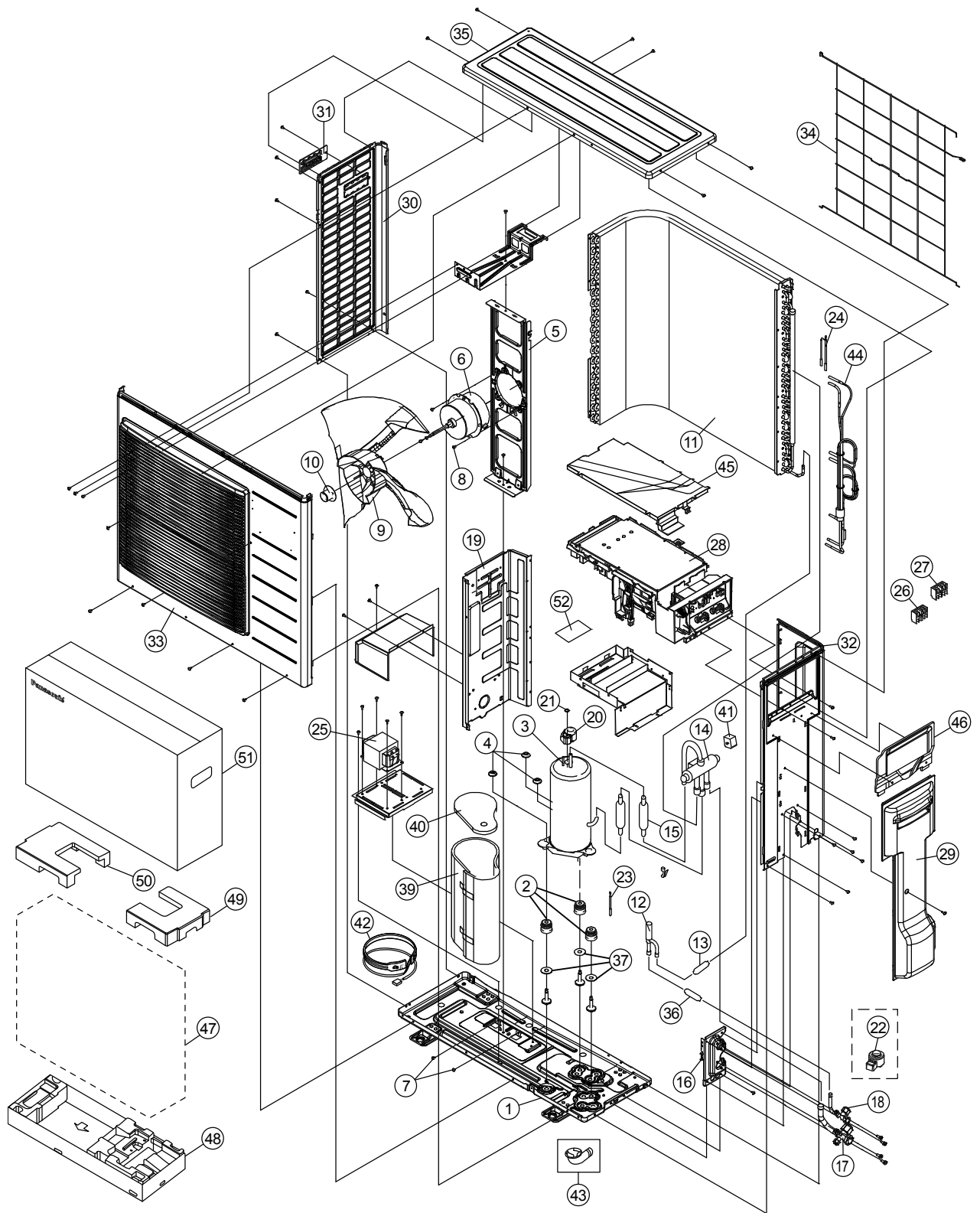



22.2.2 CU-E18RKUA CU-E24RKUA



Note

The above exploded view is for the purpose of parts disassembly and replacement.
The non-numbered parts are not kept as standard service parts.

SAFETY	REF. NO.	PART NAME & DESCRIPTION	QTY.	CU-E18RKUA	CU-E24RKUA	REMARK
	1	CHASSIS COMPLETE	1	CWD52K1228A	←	
	2	ANTI - VIBRATION BUSHING	3	CWH50055	←	
⚠	3	COMPRESSOR	1	5KD240XAF21	←	O
	4	NUT - COMPRESSOR MOUNT	3	CWH561049	←	
	5	FAN MOTOR BRACKET	1	CWD541127	←	
⚠	6	FAN MOTOR	1	EHDS80CAC	←	O
	7	SCREW - FAN MOTOR BRACKET	3	CWH551217	←	
	8	SCREW - FAN MOTOR MOUNT	4	CWH551323	←	
	9	PROPELLER FAN ASSY	1	CWH00K1006	←	
	10	NUT - PROPELLER FAN	1	CWH561092	←	
	11	CONDENSER	1	CWB32C3516	←	
	12	EXPANSION VALVE	1	CWB051018J	←	O
	13	STRAINER	1	CWB111076	←	
	14	4-WAYS VALVE	1	CWB001057	←	O
	15	DISCHARGE MUFFLER (4 W. VALVE)	1	CWB121055	←	
	16	HOLDER COUPLING	1	CWH351228A	←	
	17	3-WAY VALVE (GAS)	1	CWB011672	CWB011363	O
	18	2-WAYS VALVE (LIQUID)	1	CWB021464	←	O
	19	SOUND PROOF BOARD	1	CWH151197	←	
	20	TERMINAL COVER	1	CWH171039A	←	
	21	NUT - TERMINAL COVER	1	CWH7080300J	←	
⚠	22	V-COIL COMPLETE (EXPANSION VALVE)	1	CWA43C2393	←	O
	23	SENSOR CO-COMP TEMP	1	CWA50C2689	←	O
	24	SENSOR CO-AIR TEMP AND PIPE TEMP	1	CWA50C2710	←	O
⚠	25	REACTOR	1	G0C452J00002	←	O
⚠	26	TERMINAL BOARD ASSY	1	CWA28K1277	←	O
⚠	27	TERMINAL BOARD ASSY	1	CWA28K1076J	←	O
⚠	28	ELECTRONIC CONTROLLER - MAIN	1	CWA73C9162R	CWA73C9163R	O
	29	CONTROL BOARD COVER - COMPLETE	1	CWH13C1210	←	
	30	CABINET SIDE PLATE	1	CWE041490A	←	
	31	HANDLE	1	CWE161010	←	
	32	CABINET SIDE PLATE	1	CWE041488A	←	
	33	CABINET FRONT PLATE CO.	1	CWE06K1070	←	
	34	WIRE NET	1	CWD041128A	←	
	35	CABINET TOP PLATE	1	CWE031131A	←	
	36	RECEIVER	1	CWB14030	←	
	37	PACKING	3	CWB81043	←	
	39	SOUND PROOF MATERIAL	1	CWG302245	←	
	40	SOUND PROOF MATERIAL	1	CWG302246	←	
⚠	41	V-COIL COMPLETE (4 W. VALVE)	1	CWA43C2392	←	O
	42	HEATER	1	CWA341067	←	
	43	BAG-COMPLETE	1	CWG87C900	←	
	44	TUBE ASSY CO. (CAP. TUBE)	1	CWT01C6093	←	
	45	CONTROL BOARD COVER - TOP	1	CWH131333	←	
	46	CONTROL BOARD COVER	1	CWH131332	←	
	47	BAG	1	CWG861154	←	
	48	BASE BOARD-COMPLETE	1	CWG62C1082	←	

SAFETY	REF. NO.	PART NAME & DESCRIPTION	QTY.	CU-E18RKUA	CU-E24RKUA	REMARK
	49	SHOCK ABSORBER (R)	1	CWG712880	←	
	50	SHOCK ABSORBER (L)	1	CWG712879	←	
	51	C.C. CASE	1	CWG565614	←	
	52	ELECTRONIC CONTROLLER - NF	1	CWA747077	←	

(Note)

- All parts are supplied from PAPAMY, Malaysia (Vendor Code: 00029488).
- "O" marked parts are recommended to be kept in stock.