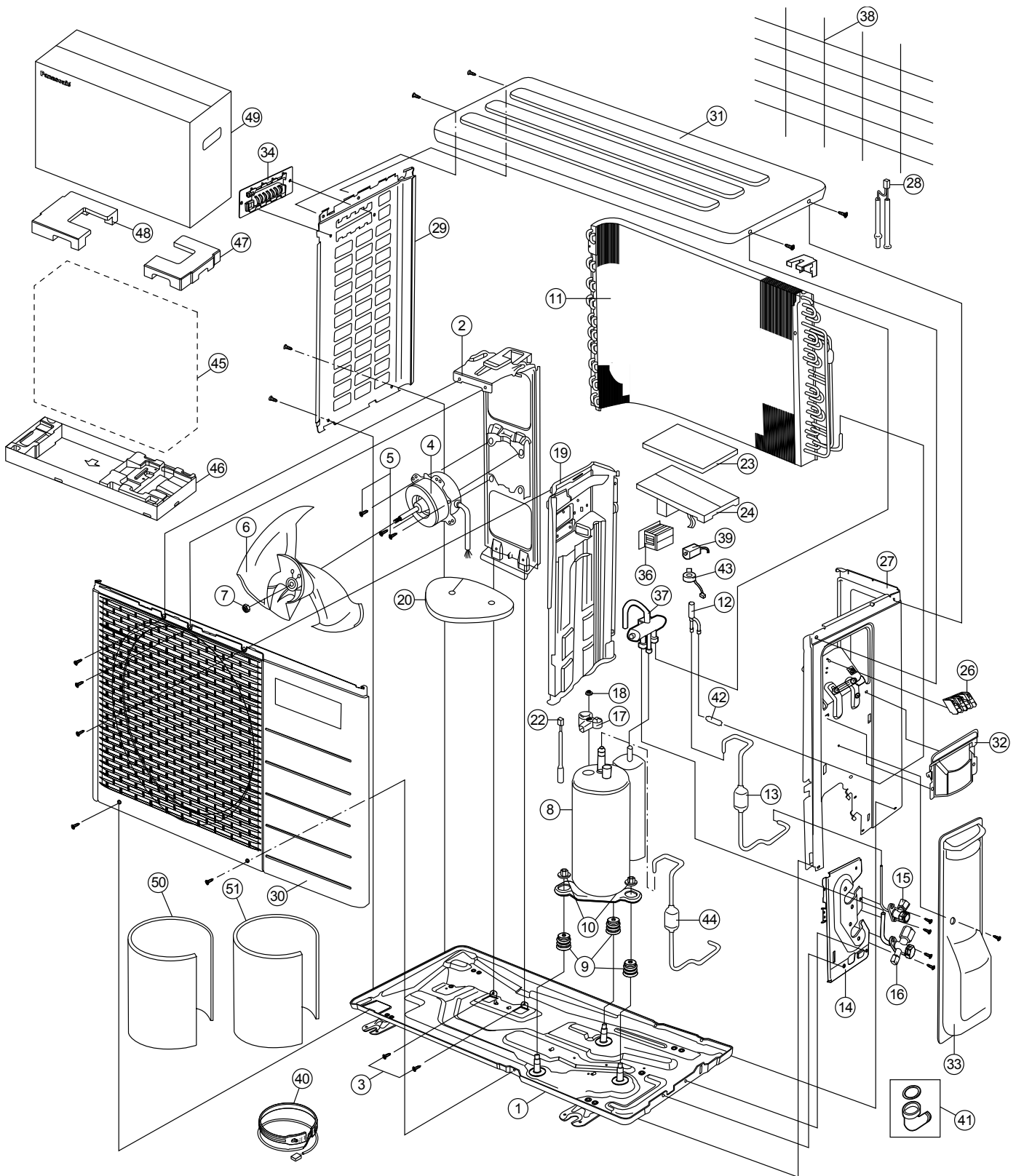


22.2 Outdoor Unit

22.2.1 CU-E9RKUA CU-E12RKUA



Note

The above exploded view is for the purpose of parts disassembly and replacement.
The non-numbered parts are not kept as standard service parts.

SAFETY	REF. NO.	PART NAME & DESCRIPTION	QTY.	CU-E9RKUA	CU-E12RKUA	REMARK
	1	CHASSIS COMPLETE	1	CWD50K2081A	←	
	2	FAN MOTOR BRACKET	1	CWD541089	←	
	3	SCREW - FAN MOTOR BRACKET	2	CWH551217	←	
⚠	4	FAN MOTOR	1	ARW6404AC	←	O
	5	SCREW - FAN MOTOR MOUNT	4	CWH55252J	←	
	6	PROPELLER FAN ASSY	1	CWH03K1014	←	
	7	NUT - PROPELLER FAN	1	CWH56053J	←	
⚠	8	COMPRESSOR	1	5RS102XHA21	←	O
	9	ANTI - VIBRATION BUSHING	3	CWH50077	←	
	10	NUT - COMPRESSOR MOUNT	3	CWH561096	←	
	11	CONDENSER	1	CWB32C3394	CWB32C4129	
	12	EXPANSION VALVE	1	CWB051016J	←	O
	13	DISCHARGE MUFFLER (EXPANSION VALVE)	1	CWB121021	←	
	14	HOLDER COUPLING	1	CWH351231A	←	
	15	2-WAYS VALVE (LIQUID)	1	CWB021180J	CWB021654	O
	16	3-WAY VALVE (GAS)	1	CWB011374	CWB011367	O
	17	TERMINAL COVER	1	CWH171039A	←	
	18	NUT - TERMINAL COVER	1	CWH7080300J	←	
	19	SOUND PROOF BOARD	1	CWH151172A	←	
	20	SOUND PROOF MATERIAL	1	CWG302570	←	
	22	SENSOR CO-COMP TEMP	1	CWA50C2340	←	O
	23	CONTROL BOARD COVER - TOP	1	CWH131264	←	
⚠	24	ELECTRONIC CONTROLLER - MAIN	1	CWA73C9160R	CWA73C9161R	O
⚠	26	TERMINAL BOARD ASSY	1	CWA28K1154	←	o
	27	CABINET SIDE PLATE CO.	1	CWE04C1226	CWE04C1558	
	28	SENSOR CO-AIR TEMP AND PIPE TEMP	1	CWA50C2793	CWA50C3315	O
	29	CABINET SIDE PLATE	1	CWE041492A	←	
	30	CABINET FRONT PLATE CO.	1	CWE06C1142	←	
	31	CABINET TOP PLATE	1	CWE031018A	←	
	32	PLATE - C. B. COVER TERMINAL	1	CWH131301	←	
	33	CONTROL BOARD COVER CO.	1	CWH13C1345	←	
	34	HANDLE	1	CWE161010	←	
⚠	36	REACTOR	1	G0C193J00002	G0C193J00004	O
	37	4-WAYS VALVE	1	CWB001058	←	O
	38	WIRE NET	1	CWD041161A	←	
⚠	39	V-COIL COMPLETE (4 W. VALVE)	1	CWA43C2432	←	O
	40	HEATER	1	CWA341065	←	
	41	BAG-COMPLETE	1	CWG87C900	←	
	42	STRAINER	1	CWB111061	←	
⚠	43	V-COIL COMPLETE (EXPANSION VALVE)	1	CWA43C2393	←	O
	44	DISCHARGE MUFFLER (4 W. VALVE)	1	CWB121047	←	
	45	BAG	1	CWG861078	←	
	46	BASE BOARD-COMPLETE	1	CWG50C2388	←	
	47	SHOCK ABSORBER (R)	1	CWG712210	←	
	48	SHOCK ABSORBER (L)	1	CWG712209	←	
	49	C.C.CASE	1	CWG565107	←	

SAFETY	REF. NO.	PART NAME & DESCRIPTION	QTY.	CU-E9RKUA	CU-E12RKUA	REMARK
	50	SOUND PROOF MATERIAL	1	CWG302292	←	
	51	SOUND PROOF MATERIAL	1	CWG302569	←	

(Note)

- All parts are supplied from PHAAM, Malaysia (Vendor Code: 00029488).
- "O" marked parts are recommended to be kept in stock.