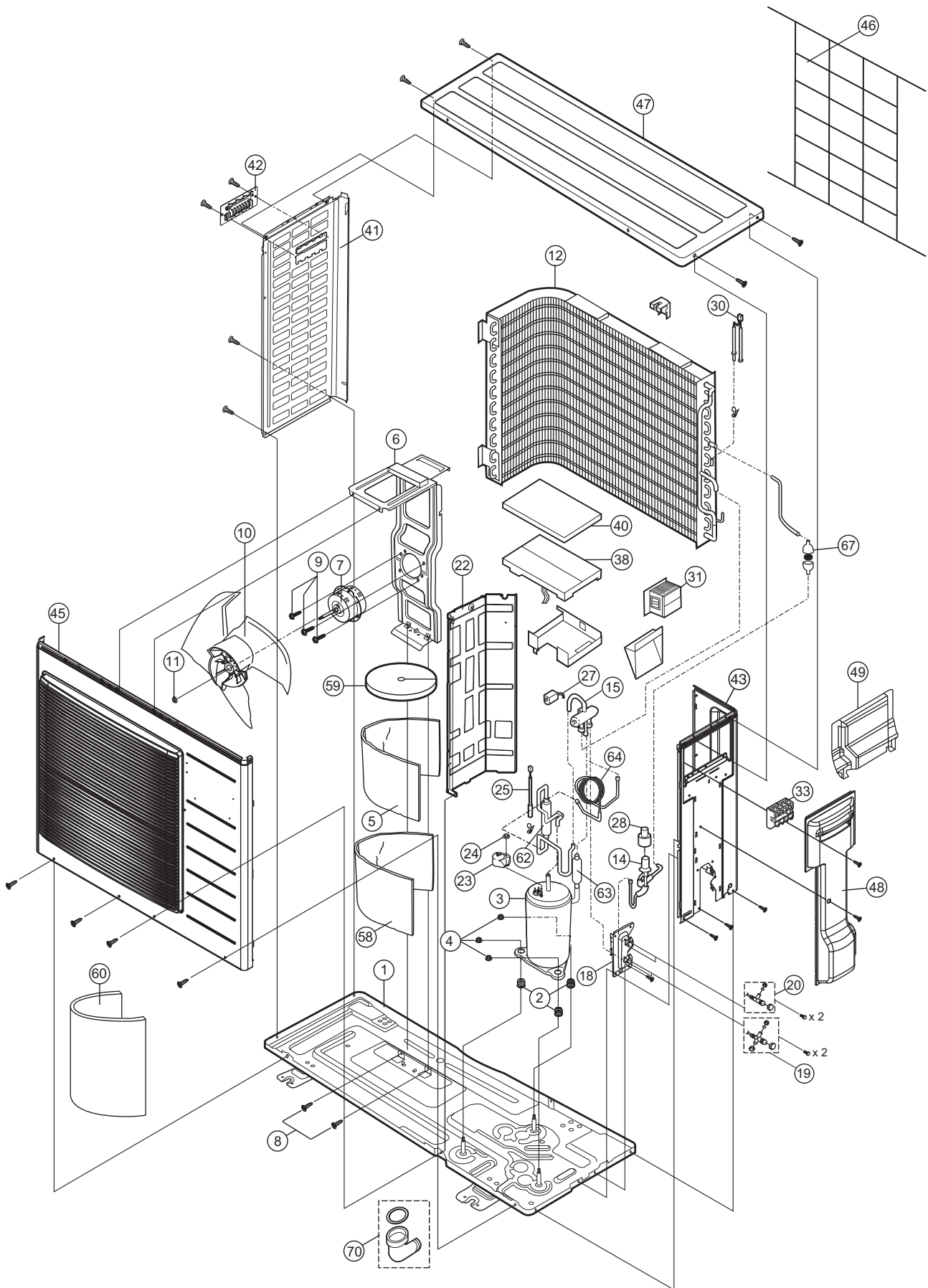


21.2.2 CU-RE18SKUA CU-RE24SKUA



Note
 The above exploded view is for the purpose of parts disassembly and replacement.
 The non-numbered parts are not kept as standard service parts.

| SAFETY | REF. NO. | PART NAME & DESCRIPTION | QTY. | CU-RE18SKUA | CU-RE24SKUA | REMARK |
|--------|----------|----------------------------------|------|---------------|---------------|--------|
| | 1 | CHASSIS COMPLETE | 1 | CWD52K1347A | ← | |
| | 2 | ANTI - VIBRATION BUSHING | 3 | CWH50077 | ← | |
| ⚠ | 3 | COMPRESSOR | 1 | 5RD132XBA21 | ← | O |
| | 4 | NUT - COMPRESSOR MOUNT | 3 | CWH561096 | ← | |
| | 5 | SOUND PROOF MATERIAL (BODY) | 1 | CWG302744 | ← | |
| | 6 | FAN MOTOR BRACKET | 1 | CWD541153 | ← | |
| ⚠ | 7 | FAN MOTOR | 1 | ARW8407AC | ← | O |
| | 8 | SCREW - FAN MOTOR BRACKET | 3 | CWH551217 | ← | |
| | 9 | SCREW - FAN MOTOR MOUNT | 4 | CWH551106J | ← | |
| | 10 | PROPELLER FAN ASSY | 1 | CWH03K1065 | ← | |
| | 11 | NUT - PROPELLER FAN | 1 | CWH56053J | ← | |
| | 12 | CONDENSER | 1 | ACXB32C00610 | ← | |
| | 14 | EXPANSION VALVE | 1 | CWB051078 | ← | |
| | 15 | 4-WAYS VALVE | 1 | CWB001057 | ← | |
| | 18 | HOLDER COUPLING | 1 | CWH351228A | ← | |
| | 19 | 3-WAY VALVE (GAS) | 1 | CWB011338 | CWB011363 | O |
| | 20 | 2-WAYS VALVE (LIQUID) | 1 | CWB021400 | ← | O |
| | 22 | SOUND PROOF BOARD | 1 | CWH151379 | ← | |
| | 23 | TERMINAL COVER | 1 | CWH171039A | ← | |
| | 24 | NUT - TERMINAL COVER | 1 | CWH7080300J | ← | |
| | 25 | SENSOR CO-COMP TEMP | 1 | CWA50C2343 | ← | O |
| ⚠ | 27 | V-COIL COMPLETE (4 WAY VALVE) | 1 | CWA43C2392 | ← | O |
| ⚠ | 28 | V-COIL COMPLETE (EXP.VALVE) | 1 | ACXA43C00320 | ← | O |
| | 30 | SENSOR CO-AIR TEMP AND PIPE TEMP | 1 | CWA50C2710 | ← | O |
| | 31 | REACTOR | 1 | G0C203J00003 | ← | |
| | 33 | TERMINAL BOARD ASSY | 1 | CWA28K1154 | ← | O |
| ⚠ | 38 | ELECTRONIC CONTROLLER - MAIN | 1 | ACXA73C04510R | ACXA73C04520R | O |
| | 40 | CONTROL BOARD COVER - TOP | 1 | CWH131333 | ← | |
| | 41 | CABINET SIDE PLATE (LEFT) | 1 | CWE041733A | ← | |
| | 42 | HANDLE | 1 | CWE161010 | ← | |
| | 43 | CABINET SIDE PLATE CO. | 1 | CWE041732A | ← | |
| | 45 | CABINET FRONT PLATE CO. | 1 | CWE06K1101 | ← | |
| | 46 | WIRE NET | 1 | CWD041155A | ← | |
| | 47 | CABINET TOP PLATE | 1 | CWE031131A | ← | |
| | 48 | CONTROL BOARD COVER-COMPLETE | 1 | CWH13C1308 | ← | |
| | 49 | CONTROL BOARD COVER | 1 | CWH131409 | ← | |
| | 58 | SOUND PROOF MATERIAL | 1 | CWG302632 | CWG302638 | |
| | 59 | SOUND PROOF MATERIAL (TOP) | 1 | CWG302630 | ← | |
| | 60 | SOUND PROOF MATERIAL | 1 | CWG302636 | CWG302600 | |
| ⚠ | 62 | DISCHARGE MUFFLER (4 W. VALVE) | 1 | CWB121047 | - | |
| | 63 | OIL SEPARATER ASS'Y | - | - | ACXB16K00010 | |
| | 64 | CAPILLARY TUBE A'SSY | - | - | CWB15K1487 | |

| SAFETY | REF. NO. | PART NAME & DESCRIPTION | QTY. | CU-RE18SKUA | CU-RE24SKUA | REMARK |
|--------|----------|-------------------------|------|-------------|-------------|--------|
| | 67 | STRAINER | 1 | CWB111076 | ← | |
| | 70 | BAG - COMPLETE (L-TUBE) | 1 | CWG87C900 | ← | |

(Note)

- All parts are supplied from PAPAMY, Malaysia (Vendor Code: 00029488).
- "O" marked parts are recommended to be kept in stock.