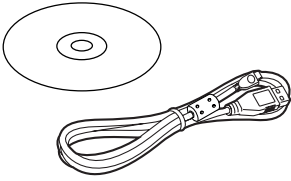


# Panasonic®

## Operating Instructions

### USB Connection Kit



Before use, please read these instructions completely.

---

Before opening the CD-ROM package, please read the following.

## ***End User License Agreement (for USB Driver, Video Stream Driver, SD Viewer and MotionDV STUDIO)***

You ("Licensee") are granted a license for the Software defined in this End User Soft Agreement ("Agreement") on condition that you agree to the terms and conditions of this Agreement. If Licensee does not agree to the terms and conditions of this Agreement, promptly return the Software to Matsushita Electric Industrial Co., Ltd. ("Matsushita"), its distributors or dealers from which you made the purchase.

### **Article 1 License**

Licensee is granted the right to use the software, including the information recorded or described on the CD-ROM, instruction manuals, and any other media provided to Licensee (collectively "Software"), but all applicable rights to patents, copyrights, trademarks and trade secrets in the Software are not transferred to Licensee.

### **Article 2 Use by a Third Party**

Licensee may not use, copy, modify, transfer or allow any third party, whether free of charge or not, to use, copy or modify the Software, except as expressly provided for in this Agreement.

### **Article 3 Restrictions on Copying the Software**

Licensee may make a single copy of the Software in whole or a part solely for back-up purpose.

### **Article 4 Computer**

Licensee may use the Software only on one computer, and may not use it on more than one computer.

### **Article 5 Reverse Engineering, Decompiling or Disassembly**

Licensee may not reverse engineer, decompile, or disassemble the Software, except to the extent either of them is permitted under law or regulation of the country where Licensee resides. Matsushita, or its distributors will not be responsible for any defects in the Software or damage to Licensee caused by Licensee's reverse engineering, decompiling, or disassembly of the Software.

### **Article 6 Indemnification**

The Software is provided "AS-IS" without warranty of any kind, either expressed or implied, including, but not limited to, warranties of non-infringement, merchantability and/or fitness for a particular purpose. Further, Matsushita does not warrant that the operation of the Software will be uninterrupted or error free. Matsushita or any of its distributors will not be liable for any damage suffered by Licensee arising from or in connection with Licensee's use of the Software.

### **Article 7 Export Control**

Licensee agrees not to export or re-export to any country the Software in any form without the appropriate export licenses under regulations of the country where Licensee resides, if necessary.

### **Article 8 Termination of License**

The right granted to Licensee hereunder will be automatically terminated if Licensee contravenes of any of the terms and conditions of this Agreement. In the event, Licensee must destroy the Software and related documentation together with all the copies thereof at Licensee's own expense.

# Contents

---

---

## Before Use

---

---

Introduction .....	4
Notes on these instructions.....	4
Names and functions of packaged items .....	5
Operating environment.....	6

---

---

## Install/Connection

---

---

Installing USB Driver (Windows 98SE only).....	8
Installing Video Stream Driver.....	9
Installation of SD Viewer 3.1E.....	10
Installation of MotionDV STUDIO 5.1E LE .....	10
Connecting the Movie Camera to Personal Computer.....	11

---

---

## Software

---

---

Starting the Software .....	14
Using the Movie Camera as a Web Camera (Windows XP SP1 or later only) .....	15

---

---

## Others

---

---

To disconnect USB cable safely .....	18
If you no longer need software or driver (Uninstall) .....	18
Notes.....	19

### ■ WARNING:

To reduce the risk of fire or shock hazard, do not expose this equipment to rain or moisture.

### ■ CAUTION:

To reduce the risk of fire or shock hazard and annoying interference, use the recommended accessories only.

---

---

## ***Before Use***

---

---

### ***Introduction***

**This USB Connection Kit lets you connect your personal computer to a Movie Camera that has a USB Terminal. You can use the kit to transfer images recorded with your Movie Camera to your personal computer.**

By controlling the Movie Camera from the personal computer, the desired images from tape or camera can be acquired into the personal computer.

### ***Notes on these instructions***

- Microsoft<sup>®</sup>, Windows<sup>®</sup>, Windows Messenger<sup>®</sup> and DirectX<sup>®</sup> are either registered trademarks or trademarks of Microsoft Corporation in the United States and/or other countries.
- Intel<sup>®</sup>, Pentium<sup>®</sup> and Celeron<sup>®</sup> are the registered trademarks or trademarks of the Intel Corporation.
- All other names, company names, product names, etc. in these instructions are the trademarks or registered trademarks of their respective corporations.
- The names of the products you are using may differ from the names given in the text. Depending on the operating environment and other factors, the contents of the screens used in these instructions may not necessarily match what you will see on your screen.
- Although the screens in these Operating Instructions are shown in English for the sake of example, other languages are supported as well.
- In this Manual, the Panasonic make digital video camera with USB Terminal is referred to as Movie Camera.
- In this manual, connections between the personal computer and the Movie Camera NV-GS400 is referred as the example.
- These instructions do not cover the basic operations of the personal computer or define any terms. For this information, refer to the Operating Instructions which accompany your personal computer.

## ***Names and functions of packaged items***

### **1) USB Connection Cable:**

- This Cable is used to connect a personal computer with your Movie Camera.

### **2) CD-ROM:**

Disc 1: SD Viewer 3.1E (→ 10)

Video Stream Driver (→ 9)

USB Driver (→ 8)

Acrobat Reader

DirectX

Disc 2: MotionDV STUDIO 5.1E LE (→ 10)

- The SD Viewer 3.1E software allows images on a Card to be displayed in a thumbnail format so that the contents of the Card can be easily checked.
- When your OS is Windows 98SE, USB Driver enables you to use the USB Connection Cable. Make sure USB Driver is installed before connecting cable.
- If the Movie Camera is connected to your personal computer, you can send video from the Movie Camera to the other parties via the network. (Windows XP SP1 or later.)
- To activate SD Viewer, Microsoft DirectX 8.1 or later should be installed. To activate MotionDV STUDIO, Microsoft DirectX 9.0b or later should be installed. If it is not installed in your personal computer, you can install it from the supplied CD-ROM. Click [DirectX] on the CD launcher and then follow the instruction message on the screen to install it. (If you install Video Stream Driver, Microsoft DirectX 9.0b is automatically installed.)
- Using the MotionDV STUDIO 5.1E LE software allows you to capture the video recorded on a tape or images viewed through the lens of a camera. Connecting the Movie camera with the DV cable also allows you to output images edited on the personal computer to the tape in the Movie camera.

## **Operating environment**

- Despite having the operating environment indicated, it may not be possible to use the program with some types of personal computer.
- A CD-ROM drive is required to install this program.

### **USB Driver**

#### **OS:**

IBM PC/AT compatible personal computer with pre-installed;

Microsoft Windows 98 Second Edition

#### **CPU:**

Intel Pentium II/Celeron 300 MHz or higher (including compatible CPU)

#### **RAM:**

32 MB or more (64 MB or more recommended)

#### **Interface:**

USB

### **Web Camera**

#### **OS:**

IBM PC/AT compatible personal computer with pre-installed;

Microsoft Windows XP Home Edition/Professional SP1 or later

#### **CPU:**

Intel Pentium III 450/Celeron 400 MHz or higher (including compatible CPU)

#### **Graphic display:**

High Colour (16 bit) or more

Desktop resolution of 800×600 pixels or more

#### **RAM:**

128 MB or more (256 MB or more recommended)

#### **Free hard disk space:**

250 MB or more

#### **Communication Speed:**

56 kbps or faster is recommended

#### **Interface:**

USB

#### **Other requirements (to send/receive audio):**

Sound card

Speaker or headphones

#### **Software:**

Windows Messenger 5.0 or later

DirectX 9.0b or later

### **To use the Movie Camera as a Web Camera, the following conditions must be met.**

- In the case of Windows XP SP1 or later is needed, to upgrade Windows XP to SP1, click [Start] >> [All Programs] >> [Windows Update]. (Requires internet connection.)
- You have direct dial-up connection capability to the internet. Also, you and the other person(s) are in the same Network (LAN).
- Install the Windows Messenger 5.0 or later.
- If the installed version is not latest, update it by performing the Windows update.
- If you are connected to the Internet through a firewall or a router, proper communication will not be possible.
- The installer is available only in English but can be used on operating systems using other languages.
- The other parties also need to use Windows Messenger on Windows XP during the communication.

## **SD Viewer 3.1E for DV**

### **OS:**

IBM PC/AT compatible personal computer with pre-installed;

Microsoft Windows XP Home Edition/Professional

Microsoft Windows 2000 Professional

Microsoft Windows Me (Millennium Edition)

Microsoft Windows 98 Second Edition

### **CPU:**

Intel Pentium III 450/Celeron 400 MHz or higher (including compatible CPU)

### **Graphic display:**

High Colour (16 bit) or more

Desktop resolution of 800×600 pixels or more (1024×768 pixels recommended)

8 MB or more video memory

(3D Accelerator recommended, 16 MB or more video memory recommended)

### **RAM:**

Windows 98SE/Me:

64 MB or more (128 MB or more recommended)

Windows 2000/XP:

128 MB or more (256 MB or more recommended)

### **Free hard disk space:**

300 MB or more

### **Interface:**

USB

### **Other requirements:**

Mouse

### **Software:**

Internet Explorer 5.0 or later

DirectX 8.1 or later

Windows Media Player 6.4 or later

## **MotionDV STUDIO 5.1E LE for DV**

### **OS:**

IBM PC/AT compatible personal computer with pre-installed;

Microsoft Windows XP Home Edition/Professional

SP1 or later

Microsoft Windows 2000 Professional SP4 or later

Microsoft Windows Me (Millennium Edition) (Only in DV connection)

### **CPU:**

Intel Pentium III 700 MHz/AMD Athlon 1 GHz or higher (including compatible CPU)

### **Graphic display:**

High Colour (16 bit) or more (32 bit recommended)

Desktop resolution of 1024×768 pixels or more (Supporting the overlay of DirectDraw)

4 MB or more video memory

### **Sound:**

PCM sound source (compatible DirectSound)

### **RAM:**

256 MB or more (Adding more memories enables you to operate the personal computer more comfortably.)

### **Hard disk:**

Ultra DMA - 33 or more

### **Free hard disk space:**

640 MB or more

(When you capture video, 1 GB is needed for the data of approx. 4 minutes.)

### **Interface:**

USB 2.0 (compatible Hi-Speed Mode)

### **Other requirements:**

Mouse

### **Software:**

DirectX 9.0b or later

Windows Media Player 6.4 or later

- When 2 or more USB devices are connected to a personal computer, or when devices are connected through USB hubs or by using extension cables, proper operation is not guaranteed.
- When connected to the keyboard USB terminal, normal function may not be possible.
- This instruction manual describes only the procedures for installation, connection and start-up. Please read the PDF-based instructions for how to use the SD Viewer 3.1E or the MotionDV STUDIO 5.1E LE.
- To view the installed operating instructions, Adobe Acrobat Reader 5.0 or higher is required. Please install Adobe Acrobat Reader from the supplied CD-ROM.
- Before using for the first time, select [Readme] from [Start] >> [All Programs (Programs)] >> [Panasonic] >> [SD Viewer] or [MotionDV STUDIO], and read any supplementary details or updates.
- The software is available in English, German and French.

---

---

## Install/Connection

---

---

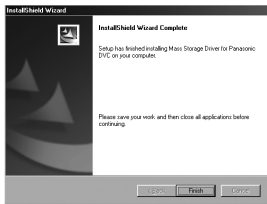
### Installing USB Driver (Windows 98SE only)

The USB driver to be installed is the dedicated Mass Storage Driver for Windows 98SE. When your OS is any of Windows XP, Windows 2000 and Windows Me, you do not have to install the USB driver because the standard driver is activated for the operation. Please install USB Device Driver first before connecting the Movie Camera to your Personal Computer with the USB Connection Cable.

3



5



- 1 Turn on the Personal Computer and start up Windows.
  - 2 Insert the supplied CD-ROM (Disc 1) into the personal computer's CD-ROM drive.
    - Quit all applications.
    - The [Setup Menu] Screen appears.
  - 3 Click [USB Driver].
    - The set up program starts running.
  - 4 Finish installation by following the on-screen instructions.
    - Click [Next] and proceed with installation.
    - After completing the installation, Click [Finish].
  - 5 Click [Finish] when the [Restarting Windows] Dialogue appears.
    - Reboot the computer to finish installing USB driver.
    - Installation continues after the computer reboots if you selected additional software.
- A message indicating a conflict between versions may be displayed during the installation. This will not cause a problem. Simply click [Yes] to proceed with the installation.



2



3



## Installing Video Stream Driver

Install this when your OS is Window XP SP1 or later, or Windows 2000 SP4 or later.

(The computer needs to be connected to the Internet.)

Video Stream Driver is needed to be installed when you connect the Movie Camera to the PC with the supplied USB cable and use MotionDV STUDIO.

DirectX 9.0b is installed in your PC if it is not installed beforehand. Applications which are compatible with older version of DirectX may not operate properly by installing DirectX 9.0b. In this case, consult the manufacturers of the applications disabled.

### 1 Insert the supplied CD-ROM (Disc 1) into the personal computer's CD-ROM drive.

- Quit all applications.
- The [Setup Menu] screen appears.

### 2 Click [Video Stream Driver].

- The set up program starts running.

### 3 You may be required to install DirectX 9.0b depending on the environment of the personal computer. In this case, click [Yes] to install it.

- Reboot the computer after DirectX is installed.
- Do not take out the CD-ROM.

### 4 Finish installation by following the on-screen instructions.

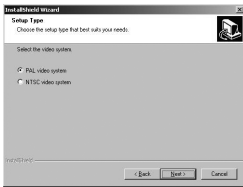
- Click [Next] and proceed with installation.
- After completing the installation, Click [Finish].

### 5 Click [OK].

2



4



5



## Installation of SD Viewer 3.1E

- 1 Insert the supplied CD-ROM (Disc 1) into the personal computer's CD-ROM drive.
- 2 Click [SD Viewer 3.1E].
  - If a message that indicates the absence of DirectX 8.1 or later is displayed, install DirectX first.
- 3 Click [Next].
  - After reading the displayed contents, please carry out the installation according to instructions.
- 4 Select the Video System.
  - The size and the frame rate of the slide show with effects to be outputted are determined by the selected Video System (PAL or NTSC).
- 5 After the completion of setup, click on [Finish].
  - Installation will be completed.

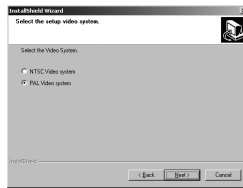
## Installation of MotionDV STUDIO 5.1E LE

DirectX 9.0b is installed in your PC if it is not installed beforehand. Applications which are compatible with older version of DirectX may not operate properly by installing DirectX 9.0b. In this case, consult the manufacturers of the applications disabled.

2



3

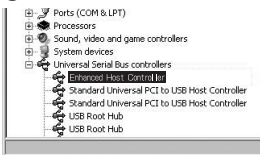


4



- 1 Insert the supplied CD-ROM (Disc 2) into the personal computer's CD-ROM drive.
- 2 Click [Next].
  - After reading the displayed contents, please carry out the installation according to instructions.
- 3 Select the Video System.
- 4 After the completion of setup, click on [Finish].
  - Sample data is installed concurrently with the MotionDV STUDIO 5.1E LE software.
- 5 Click [Finish] when the [Restarting Windows] Dialogue appears.
  - Reboot the computer to finish installing MotionDV STUDIO.

3



4



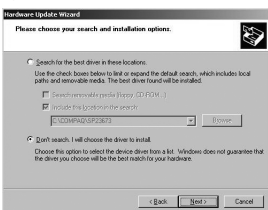
1



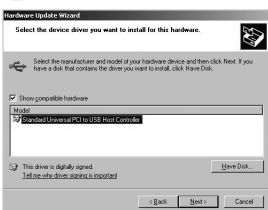
2



3



4



## Connecting the Movie Camera to Personal Computer

- When you use a personal computer, use of the AC Adaptor is recommended for the power supply of the Movie Camera.

### Confirmation before connection (for Windows XP/2000)

When you connect the personal computer and the Movie Camera with the USB connection cable and then use MotionDV STUDIO on Windows XP (SP1 or later) or Windows 2000 (SP4 or later), check the driver of the USB host controller.

- It is required to use the driver for which [Microsoft] is displayed on [Driver Provider] in [Driver] tab.

1 Select [Start] >> [Settings] >> [Control Panel] to start [System].

- [System Properties] is displayed.

2 Click [Hardware] tab and then click [Device Manager].

3 Right-click [Enhanced Host Controller] etc. in [Device Manager] and then select [Properties].

- The indication [Enhanced Host Controller] is changed as [EHCI] depending on the host controller you use.

4 Click [Driver] tab to check the description on [Driver Provider].

- If [Microsoft] is displayed on [Driver Provider], the confirmation procedure is completed.

If a description other than [Microsoft] is displayed

- Update the driver with the following procedure.

1 Click [Update Driver...].

2 Check [Install from a list or specific location (Advanced)] and then click [Next].

- When your OS is Windows 2000, click [Next] after [Update Device Driver Wizard] appears.

3 (When your OS is Windows XP) Check [Don't search. I will choose the driver to install] and then click [Next].

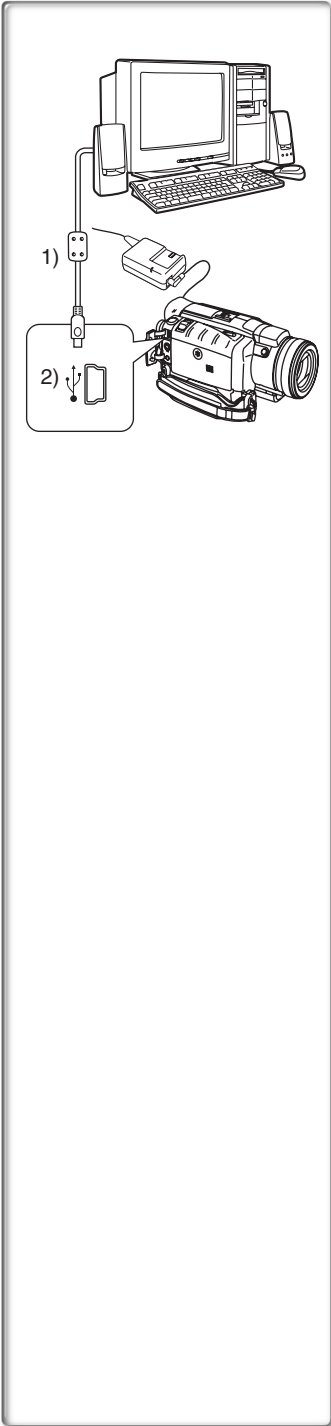
(When your OS is Windows 2000)

Check [Display a list of the known drivers for this device so that I can choose a specific driver] and then click [Next].

4 Click [Standard Universal PCI to USB Host Controller] and then click [Next].

5 Click [Finish].

- The update of the driver is completed. Connect the Movie Camera.



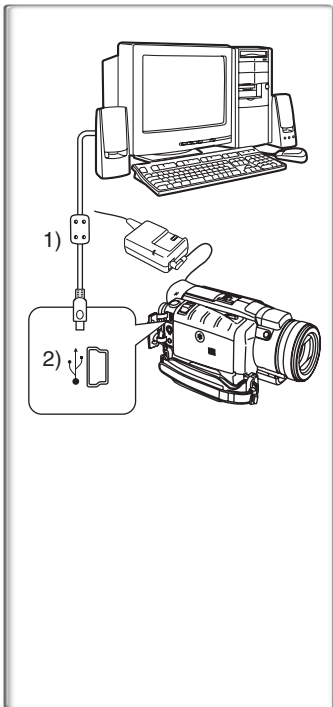
## ■ For Using SD Viewer 3.1E

When your OS is Windows 98SE, Install USB Driver before connecting. Never connect the USB Connecting Cable until the USB Driver is installed.

- 1 Insert the Memory Card into the Movie Camera.
- 2 Set the Movie Camera to PC Accessing Mode.
- 3 Connect the Movie Camera to Personal Computer with auxiliary USB Connection Cable.
  - It enters PC Accessing Mode.
- 4 Start SD Viewer 3.1E. (→ 14)

- 1) USB Connection Cable
- 2) USB terminal

- To copy the data from the memory card to a personal computer using Explorer, etc. instead of SD Viewer 3.1E, set the Movie Camera to PC Accessing Mode and insert the card.



## ■ For Using MotionDV STUDIO 5.1E LE

If you wish to capture data from a tape, set the Movie Camera to Tape Playback Mode and insert the tape. If you wish to capture images from the lens of the Movie Camera, set the Movie Camera to the Tape Recording Mode and remove the tape and the card.

### **With USB Connection Cable (supplied)**

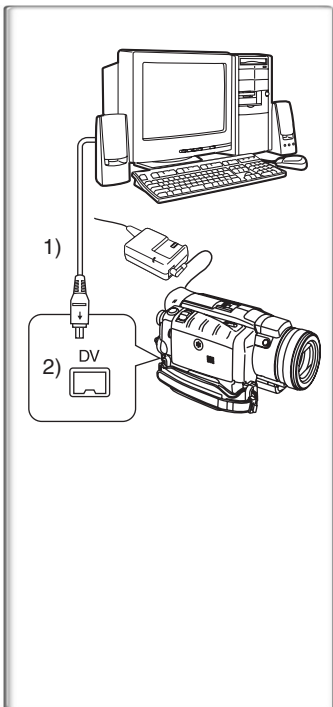
OS: Windows XP SP1 or later  
Windows 2000 SP4 or later

The personal computer should be compatible with USB 2.0 Hi-Speed.

- 1 Set the Movie Camera to Tape Playback Mode or Tape Recording Mode.**
- 2 Set [PLAYBACK] or [CAMERA] >> [USB FUNCTION] >> [MotionDV].**
- 3 Connect the Movie Camera to Personal Computer with auxiliary USB Connection Cable.**
- 4 Start MotionDV STUDIO 5.1E LE. (→ 14)**

• You cannot record the video edited by the PC onto the Tape in the Movie camera.

- 1) USB Connection Cable
- 2) USB terminal



### **With DV Cable (optional)**

OS: Windows Me/2000/XP

- 1 Set the Movie Camera to Tape Recording Mode or Tape Playback Mode.**
- 2 Connect the Movie Camera to Personal Computer with auxiliary DV Cable.**
- 3 Start MotionDV STUDIO 5.1E LE. (→ 14)**

• You can record the video edited by the PC onto the Tape in the Movie camera.

- 1) DV Cable
- 2) DV terminal

---

---

## Software

---

---

### Starting the Software

#### ■ To start SD Viewer 3.1E

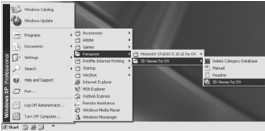
- 1 Select [Start] >> [All Programs (Programs)] >> [Panasonic] >> [SD Viewer for DV] >> [SD Viewer for DV].

#### ■ To start MotionDV STUDIO 5.1E LE

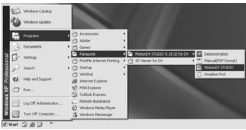
- 1 Select [Start] >> [All Programs (Programs)] >> [Panasonic] >> [MotionDV STUDIO 5.1E LE for DV] >> [MotionDV STUDIO].

- If a short-cut icon has been created on the desktop during installation, it is also possible to start by double-clicking on the icon.
- Please read the PDF-based instructions for how to use it. (→ 7)

1



1



## Using the Movie Camera as a Web Camera (Windows XP SP1 or later only)

To upgrade Windows XP to SP1, select [Start] >> [Windows Update].

If the Movie Camera is connected to your personal computer, you can send video and sound from the Movie Camera to the other parties via the network. Audio may also be exchanged if the personal computer is configured accordingly. (You can use the microphone equipped with the personal computer instead of the one on the Movie Camera.)

● Refer to Page 6 for the minimum requirements.

### ■ Connecting the Movie Camera to Personal Computer (For Using as a Web Camera)

- 1 Install Video Stream Driver and then make the Movie Camera recognized by a personal computer. (→ 9)
- 2 Set [CAMERA] >> [USB FUNCTION] >> [WEB CAMERA].
- 3 Connect the Movie Camera to Personal Computer with auxiliary USB Connection Cable.
- 4 Start the Windows Messenger.

● Click [Start] >> [Programs] >> [Windows Messenger].

- 1) USB Connection Cable
- 2) USB terminal
- 3) The WEB CAMERA mode screen

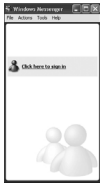
● To send pictures recorded on a tape to other personal computer using the Windows Messenger, set [PLAYBACK] >> [USB FUNCTION] >> [WEB CAMERA] on Tape Playback Mode before connecting the Movie Camera to your personal computer.



## ■ Setting up the Windows Messenger

When starting the Windows Messenger for the first time, its setup screen is displayed. (However, the screen is not displayed if the Windows Messenger setup has already been done.)

1



2



3



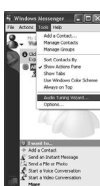
4



5



6



7



1 Click [Click here to sign in].

2 Select [.NET Messaging Service] and click [OK].

3 After the .NET Passport Wizard is displayed, click [Next].

- Please refer to the instruction manual of your personal computer for how to configure the audio and the microphone.
- To communicate with persons using Windows in other languages, setting up using alphabets or numbers is recommended.

4 According to the procedures displayed on the screen, continue the setup.

5 After the setup is completed, sign in and start the Windows Messenger.

- Windows Messenger is activated.
- Please refer to the HELP file of the Windows Messenger for understanding its operation.
- During set up, if [Primary video capture device] selection screen is displayed, [Panasonic DVC Web Camera] is selected.
- Send the sound by using the microphone attached to the Personal Computer.

6 Click [Tools] >> [Audio Tuning Wizard...] on the menu.

- Select the camera, microphone and speaker for setting.

7 Read the message carefully and then click [Next].



8



9



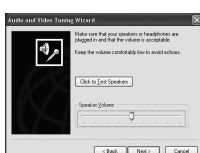
10



11



12



13



14



8 Select [USB Video Device] on [Camera] and then click [Next].

9 Check if the video from the Movie Camera is displayed on the screen and then click [Next].

- The video from the Movie Camera looks horizontally reversed on the screen.

10 Read the message carefully and then click [Next].

11 Select [DVC] on [Microphone], the speaker to be used and then click [Next].

12 Adjust the volume of the speaker and then click [Next].

- You can hear the sound by clicking [Click to Test Speakers]. Adjust the adequate volume.

13 Adjust the volume of the microphone as indicated in the message and then click [Next].

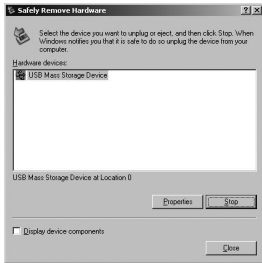
14 Click [Finish].

- For communication, you need to set the items in [Add a Contact] on the Windows Messenger. For details, refer to the HELP file of the Windows Messenger.

1



2



3



## Others

### To disconnect USB cable safely

If USB cable is disconnected while computer is on, error dialogue may appear. In such case click [OK] and close the dialogue box. By following the steps below you can disconnect the cable safely.

- 1 Double click the  icon in task tray.
  - Hardware disconnect dialogue appears.
- 2 Select [USB Mass Storage Device] and click [Stop].
- 3 Verify [Matshita DVC USB Device] is selected and click [OK].
  - Click [OK], and you can safely disconnect the cable.

### Note on the driver name displayed

The driver name displayed will differ depending on your OS, operating environment and the mode of the Movie Camera.

- If you use Windows 98SE, the icon is not displayed on the task tray.
- Make sure Movie Camera's function light is off and disconnect the cable. Please also read the Movie Camera's Operating Instructions.

### If you no longer need software or driver (Uninstall)

The screens may vary with the type of the OS. (In this manual, explanation is offered with Windows XP screen.)

1



- 1 Select [Start] (>> [Settings]) >> [Control Panel], select the software or the driver from [Add/Remove Programs] to uninstall.
  - Uninstalling steps may vary depending on the OS. Please refer to the user manual of your OS.

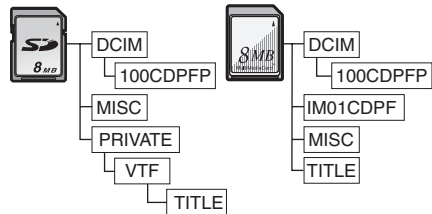
## Notes

- Do not disconnect USB Connection Cable while the access light of the Movie Camera is on. It may freeze the software or destroy the data in transfer. Please refer to the Operating Instructions of Movie Camera.
- If you use Windows Me/98SE, the message, "File is not found" may be displayed when the Movie Camera is connected for the first time. Enter the following paths to complete the connection: If the message "MTDV98M3.pdr is not found" is displayed, enter "C:\WINDOWS\system\IOSUBSYS". If the message "MTDV98M3.sys is not found" is displayed, enter "C:\WINDOWS\system32\DRIVERS". (The paths will differ depending on the environment of your personal computer.)
- When the Movie Camera is switched to the PC Accessing Mode while it is connected to the personal computer, the operation mode of the Movie Camera cannot be switched. In this case, disconnect the USB Connection Cable. Switch the operation mode of the Movie Camera and reconnect the Cable.
- If the Movie Camera is connected in the PC Accessing Mode, the [Removable Disk] icon representing the Memory Card drive is displayed in [My Computer].
- If the Movie Camera is used as a Web Camera, the quality of the video to be exchanged will depend on the Internet connection status.
- In the WEB CAMERA mode, video (picture) cannot be recorded onto a tape or a card.
- In the WEB CAMERA mode, the audio may be interrupted in the midway of communication depending on the communication environment or the performance of the personal computer.
- When the Tape Recording Mode of the Movie Camera is switched to the PC Accessing Mode, a warning message may be displayed. You may simply ignore it.
- When you are using Windows XP or Windows 2000, you may install or uninstall this software after logging on by setting the user name to Administrator or to a user name having equivalent authority.
- If the Movie Camera is used as a Web Camera while virus checking software is running, the Movie Camera's operation may stop midway through. In this case, exit the Windows Messenger, reconnect the Movie Camera and restart the Windows Messenger.

- We recommend using AC adapter as the power source for the Movie Camera when using USB Connection Kit. Data may be lost if the battery power is lost while transferring.
- Do not delete the folders in memory card. Memory card may not be recognized if deleted.
- If you install the USB Driver or Video Stream Driver while the USB Connecting Cable is being connected, or if you don't follow these Operating Instructions, the Movie Camera will not be recognized correctly. In this case, delete the Driver from [Device Manager] as described below, uninstall the Driver, and re-install it.
  - ① Set the Movie Camera to Tape Recording Mode or Tape Playback Mode, connect it to the personal computer, and delete [USB Video Device] (or [Panasonic DVC DV Stream Device]) from [Device Manager].
  - ② If you use Windows 98SE, set the Movie Camera to PC Accessing Mode and delete [Panasonic DVC USB Storage].

## Note on the folder structure of the Memory Card

- When a Card with data recorded on it is inserted into a personal computer, folders will be displayed as in the figure.



- [100CDPFP]: The images (IMGA0001.jpg, etc.) in this folder are recorded in the JPEG format.
- [MISC]: Files in which DPOF Data has been set to the image are in this.
- [TITLE]: This contains the data of the original titles (USR00001.ttl, etc.).
- [DCIM], [IM01CDPF], [PRIVATE], [VTF] etc. are necessary items in the folder structure. They have nothing to do with actual operations.

**B**

VQT0K53

F0604Kz0 ( 1500 <sup>Ⓐ</sup> )

**C**



**Matsushita Electric Industrial Co., Ltd.**

Web site: <http://www.panasonic.co.jp/global/>